

**LYUBEN KARAVELOV UNIVERSITY OF CIVIL ENGINEERING - SOFIA  
FACULTY OF ARCHITECTURE**

**DEPARTMENT OF URBAN PLANNING, HISTORY AND THEORY OF  
ARCHITECTURE**

**TERRITORIAL ORGANIZATION APPROACH FOR THE  
PRESERVATION OF ARCHITECTURAL HERITAGE WITH  
CONSERVATION AND MANAGEMENT PLANS (CMP)**

## **ABSTRACT**

**from dissertation work for the acquisition of  
the educational and scientific degree "Doctor"**

**IN THE PROFESSIONAL DIRECTION  
5.7 "ARCHITECTURE, CONSTRUCTION AND GEODESY"**

**SCIENTIFIC SPECIALTY 02.17.02. "CONSERVATION, RESTORATION AND  
ADAPTATION OF CULTURE MONUMENTS"**

**arch. Valentina Edreva**

**SOFIA, 2022**

**Scientific consultant: Assoc. Prof. Dr. Arch. Valentina Varbanova**

The dissertation is structured in two parts:

- \* The first part contains the actual theoretical research. It has a volume of 212 pages, 18 pages of notes, and a bibliography of 7 pages
- \* The second part consists of appendices with a total volume of 71 pages: 147 items, of which 124 cited, 9 author's figures + author's text for a moral code and 13 author's photographs; 5 author's tables; Number of literature sources: 91; Number of publications on the topic: 10

The PhD student is enrolled in a free doctoral program at the Department of Urban Planning, History and Theory of Architecture (Protocol №20 / 29.06.2015) at VSU "Lyuben Karavelov" by order of the Rector № 1043./09.10.2015. and was accepted with the right to dissertation defence by order of the Rector № 1246 / 20.12.2017. on the basis of Protocol №7 / 20.12.2017 from the Faculty Council of the Faculty of Architecture at VSU "Lyuben Karavelov" - Sofia.

With Protocol №2 from 09.05.2022. of the Extended Council of the Department of Urban Planning, Theory and History of Architecture (based on Order ДРД-0028 / 27.04.2022 of the Rector of VFU "Lyuben Karavelov" - Sofia) it is decided that the doctoral student is ready for defense before a scientific jury.

## CONTENTS

<b>Introduction</b> .....	4
Object and subject of the research .....	4
Relevance .....	4
Aim and tasks of the research .....	5
Conceptual apparatus .....	6
Range of the study .....	7
Research methods .....	7
Structure and scope of the study .....	7
<b>First chapter. Research context</b> .....	8
1.1. Historical context .....	8
1.1.1. Conservation of the CH from the Liberation until 1944 .....	9
1.1.2. Conservation of the ICH from 1944 to 1969 .....	10
1.1.3. Conservation of the ICH from 1969 to 1990 .....	11
1.1.4. Conservation of the ICH in the transition period from 1990 to 2009. ....	11
1.1.5. Conservation of the ICH with the adoption of the LCH from 2009 to the present.....	11
1.2. Architectural context .....	12
1.3. Social context .....	12
<b>Chapter Two. The essence of the territorial protection of cultural-historical heritage (CHH) from the second half of the twentieth century and the beginning of the XXI century</b> .....	14
2.1. Regulatory base .....	14
2.2. Typology of the types of territorial protection .....	15
2.3. Selection of emblematic examples at home and abroad .....	18
2.4. Systematization, achieved results, positive sides, flaws and proposals .....	24
2.5. Summarized conclusions serving to form a methodology .....	25
<b>Chapter three. Current state of the territorial-organization protection of the CHH from the end of the twentieth century to the present day</b> .....	26
3.1. Overall picture .....	26
3.2. Active factors .....	30
3.3. Problematic situations .....	31
3.4. Summarized conclusions serving to form a methodology for Chapter 4 .....	32
<b>Chapter four. Method for the application of territorial protection of the objects of CHH, including Conservation and Management Plans (CMP).....</b>	33
4.1. Conservation model proposals for the respective types of CHH objects - scheduling and typological frameworks, conservation activities, participants, etc. ....	33
4.1.8. Conservation and management plans .....	36
4.2. Guidelines for improving the national conservation system and territorial protection .....	39
4.3. Alternative models for (provoking) conservation .....	43
<b>Conclusion</b> .....	44
Summarized conclusions from the scientific work .....	44
Contribution .....	44
Prospects for development .....	45
Author's participation in scientific conferences and publications on the topic of the dissertation .....	49

## INTRODUCTION

**Architectural heritage (AH) objects have the status of protected if they have successfully passed the tests for authenticity and originality of the design, execution, materials, craftsmanship or environment and if there is a distance in time for their impartial assessment.**

The objects of the AH are single buildings and facilities, urban ensembles.

The main problem of their territorial protection is how best to preserve, with the least resources, the authenticity and significance of each individual object and with an appropriate function to revive for a new life as part of the living environment. The task of the present work is to study all systems and aspects that have formed and are forming AH, equal to the real CH, and the activity for its protection, integration with other types of cultural heritage and in the interrelation **time - space - human activity.**

The paper introduces the term "**shared cultural space**". This is the space in which *“memory shared by groups of people is preserved and which helps to build the foundations of their identity”*<sup>1</sup> and their integrated modern living environment.

### OBJECT AND SUBJECT OF THE RESEARCH

The territorial-structural protection of the ICH includes all architectural and construction, archeological and landscape objects and structures with the status of protected objects and territories. Their species characteristics define them: as single objects and groups - complexes, ensembles, entire settlements, areas; as historical; belonging to different scientific and cultural fields; integrated - cultural routes, cultural corridors, cultural landscape.

Through a historical review of the territorial-structural protection of the AH in Bulgaria by analyzing practical models, and based on a comparative analysis of different international practices, an attempt is made to derive a modern complex model - strategy. By comparing these practices, experience is gained for the tools for synthetic conservation of AH resources. The change in one of the two interrelated approaches to protection - territorial and legal protection, which leads to a change in the other and is also subject to study.

### RELEVANCE

The activities for territorial protection of the AH are carried out in the public interest and their definition, systematization, analysis and further development will always be a topical task for professionals, as well as for the whole society.

This study is relevant and determined by the following factors:

<sup>1</sup> - Robert Picard, *Expert Consultant, Policy and Practice Analysis*, p. 6 - Foreword by Catherine Roth, Director of the Culture and Cultural and Natural Heritage Directorate

- lack of an adequate fully integrated protection system, guaranteeing professional results at each stage of any intervention on the objects of the architectural heritage (AH);
- Need to update the existing identification system not only the individual cultural values, but the whole integrated context;
- lack of a national strategy for the protection of the immovable cultural heritage (ICH);
- violation of the rights and interests of the whole society by depriving it of quality protected, preserved and presented architectural objects of the CH;
- the need to recognize the activity for the protection of the immovable cultural heritage (ICH) as a national priority for the whole society;
- the scale of destruction of the objects of the immovable cultural heritage;
- the need for an integrated approach and interdisciplinary cooperation;
- need for training and education of professionals with high morale;

### **AIM AND TASKS OF THE RESEARCH**

The main goal of the work is to derive a model of professional measures, methods and methodology for physical conservation of protected areas, for continuous monitoring by interdisciplinary teams. To implement a universal strategy with the involvement of the local population in the conservation of AH as part of the "shared cultural space" based on the Conservation and Management Plans (CMP).

The aim of the dissertation is the scientific-theoretical and practical-applied research of the problems for integrated conservation of ICH sites in the context of sustainable development and environmental protection, which put the protection of AH among the spatial planning and urbanism.

#### **The following tasks are set in the work :**

1. to systematize the current practices in the activity for territorial-spatial planning protection of architectural heritage, which is the immovable cultural heritage (ICH);
2. to propose improvement of the current legislation;
3. to propose more precise and new definitions of concepts for territorial protection of AH;

#### **The following methods have been identified to achieve the objectives:**

- Study of the legal frameworks, institutional and management systems that existed in Bulgaria and their adequacy and usefulness for the conservation of the ICH.
- Study of current trends, economic, social, technical, etc. factors in the protection of ICH. Defining the problems with the protection of AH.
- Research of the experience abroad and in Bulgaria as research, projects and realizations of Plans for management of the objects of the World cultural heritage;

- outlining guidelines for updating the legal framework of the activity for territorial structural protection of the architectural heritage;
- review of the protection methodology with Conservation and Management Plans (CMP);
- Derivation of theoretical models - from the international conservation practices through management plans and analysis of the Bulgarian experience are determined the principles of the applicable method - strategy with formulated goals, responsibilities, action plan.

## CONCEPTUAL APPARATUS - SUGGESTIONS FOR CLARIFICATION

- activity “**conservation of the architectural heritage**” - includes all physical, territorial-structural and legal actions, scientifically substantiated for informing, researching, documenting, evaluating, interventions for conservation, restoration, adaptation, exhibition and socialization of the objects of AH and their environment for long-term stabilization and integration into a sustainable living environment.
- “**monument of culture**” - status of a protected object under the LCH, assessed according to the criteria for assessment of cultural values and significance of the ICH.
- “**cultural costliness/value**” - a criterion for assessing the specific characteristics, authenticity and integrity of CH objects on certain grounds.
- “**status**” of a protected object of the CH - award of a specific place in the list of protected objects, according to the significance and species characteristics of the criterion base for the values /costliness that a CH object has and its inclusion in this list as an object of protection.
- **Territory** - An area in which some specific activity is being carried out.

New species characteristics:

- “**cultural landscape**” - according to Art. 47, item 6 of the LCH, this is “*the set of spatially distinct sustainable cultural stratifications resulting from interaction of man and the natural environment characterizing the cultural identity of a territory.*”

I propose a clarification - The set of spatially separated sustainable cultural stratification with object/s of CH in interaction with characteristic natural landscape, whether or not it is the result of anthropogenic intervention, but shapes the environment in which cultural identity has historically developed, shapes the “cultural landscape” of a given territory.

- “**shared cultural spaces**” - modules of memory and inheritance of knowledge, art, traditions, unique cultural events in permanent continuity with regulated cultural policies. Integration spaces between memory, living environment, culture, tourism, forming a unified cultural environment.

Defining the term “**shared cultural space**” is to define the proportions of the various

systems of development in this place. The identification of such areas is for the purpose of conservation and further development for sustainable development, for measures for reconciliation, protection and management and active participation of permanent residents with the imposition of certain responsibilities.

- **The Conservation and Management Plan** has been introduced by the LCH - a Strategy for Integrated Protection, which collects all the information for identification of the respective object of the AH with its environment. Explains the problems of all components, its governing bodies. Defines all short-term, medium-term and long-term activities for its protection with direct managers, monitoring, maintenance.

- Monuments of the European community have been defined - serial sites and cultural corridors, traditional areas with cultural accumulations, played a significant role in the historical development of Europe and are common traditional shared cultural spaces for more than one country.

## **RANGE OF THE RESEARCH**

Territorial structural protection in the protection of the AH in the proposed periods in Bulgaria to be recognized as a national economic resource for the development of cognitive tourism, for sustainable and specific development of the living environment.

## **RESEARCH METHODS**

The research methods have an analytical, comparative and systematic approach.

Comparison with modern internationally derived principles and practices goals to compare the level of our activity on territorial spatial planning protection of the CH, the sustainable development of the system, in accordance with these principles.

## **STRUCTURE AND SCOPE OF THE STUDY**

The research is in the volume of textual and graphic materials.

**The first part** contains the actual theoretical study of 204 pages of text, 19 pages of notes.

It consists of the following parts:

**Introduction to the topic** - the characteristics of the work are presented;

**First chapter** - historical review of protection with territorial-structural protection of the AH in Bulgaria from 1878 to this day; architectural and social context of the activity;

**Second chapter** - the normative documents are listed, the essence and the characteristic features of the territorial protection of the AH are clarified. Examples of territorial-structural protection in Bulgaria and Europe are considered, such as good practices and methodologies for following management plans and CMP;

**Third chapter** - the current state of the territorial-structural protection of the cultural-

historical heritage (CHH) is considered and its development in Bulgaria since 1944 is assessed until today (2020); the current factors and problem situations are presented;

**Chapter Four** - presents a methodology for the application of territorial-structural protection of the objects of the CHH, including the CMP. Models and guidelines for improving the national conservation system are proposed.

**The Conclusion** summarizes and achieves results.

**Bibliography** - a total of 91 sources

**The second part** consists of graphic applications with a total volume of 70 pages: 147 copies, of which 124 foreign, 9 author's figures + author's text for a moral code and 13 author's photographs; 5 author's tables; Number of literature sources: 91; Number of publications on the topic: 10. The presented information was obtained on the basis of a study in NDA of NIICH and published MP and was analyzed by the author.

## CHAPTER 1

### CONTEXT OF THE RESEARCH

#### 1.1. Historical context

The first in Italy during the Renaissance sought to preserve and stabilize the material traces and historic buildings of antiquity. Towards the end of the 18th and 19th centuries, various concepts of protection developed through historical romantic restoration and reconstruction of an image completed in a "stylistic restoration". At the end of the 19th century, an approach was needed to "conserve" the immovable cultural heritage (ICH) as a territorial defense. Camilo Boyto was the first to classify the principles as territorial protection. It is::

- Archaeological restoration - decisions based on scientific reliability for monuments of antiquity;
- Picturesque restoration - freedom in the decisions of the detail, without interpretation of missing parts in the original for medieval monuments;
- Architectural restoration - for monuments from the Renaissance and the following styles in architecture.

Rules are set out for the restoration of buildings in *the Restorer's Charter*.

Three approaches to territorial protection and governance of the CH have been identified:

1. The "**conventional**" approach focuses on the identification of values and the conservation of material traces - monuments, ensembles and remarkable places. It is approved by the special state legislation. The scientific one has been raised approach to territorial protection adopted by *the Athens Charter*.
2. The "**conservation-restoration approach**" emerged after the end of SWW. In addition



to conservation, restoration of destroyed elements and entire buildings is allowed with indisputable archival documents. The approach has been adopted through *the Venice Charter*. Universal territorial protection is also through the Conservation Plan.

3. The "**values approach**"<sup>2</sup> at the beginning of the XXI century is a concept of territorial protection and management system, including local communities responsible for the protection of ICH in an individual management system through MP of each specific significant object of ICH in the context of its environment, **with change management**.

The Bulgarian theoretical and practical experience in the protection of the ICH with a territorial-structural approach to protection is outlined in several **periods**:

#### **1.1.1. Protection of the CH from the Liberation (1878) until 1944.**

The first attempt for **structural protection** of the Revival structure was the first General Regulatory Plan of Plovdiv by arch. Joseph Schneiter in 1896.

In 1927 (SG, issue 69 / 29.06.1927) **first register** of protected sites of the ICH with the status of "folk antiquities" describes the location as the first identified "**protected area**" of the CHH and **part of its territorial protection**.

In 1927 in Old Plovdiv are listed as protected and four street directions for the preservation of the Revival urban structure by arch. Hristo Peev with public works regulations with specific requirements. In 1940 in the ZRP of Plovdiv the Three Hills is distinguished in a protected "Old Town".

In *the Ordinance - law for preservation of ancient buildings in the settlements* of 1936. norms for preservation of urban structures in the AH have been determined.

The first attempt to protect the environment of folk antiquity and its adjacent natural framework was the establishment of the National Park near Madara, Shumen region in 1936. Proposed by Rafail Popov - Director of NAM. The state expropriates the lands in the area of Pliska, Preslav and Madara for archeological research, which is a territorial-organization protection of the landscape as well. With the norms in the Ordinance-law the state revenues from these lands are given in favor of the archeological association in Shumen as an attempt for protection with financing of the maintenance.

- The first period after the Liberation laid the legal foundations for the activity "Preservation of the AH", with the introduction of the first measures for territorial-organization protection.

- The Antiquities Act (1911) already provided for a procedure for the expropriation of

<sup>2</sup> - Gamini Weigesuria, Jane Thompson, Christopher Young, ICCROM Consultants, *World Heritage Management, Resource Handbook*, Published in 2013 by UNESCO, place de Fontenoy 7, 75352 Paris 07 SP, France, p.24-25

immovable antiquities (Art. 26) in order to protect them in the public interest.

- Specific norms for protection of streets, squares, settlements and other architectural objects introduced by the Ordinance - law are territorial-organization protection.
- The envisaged incentives in the Ordinance-Law with exemption from taxes and fees for the owners, who preserve the old buildings, with municipal financing of repairs, represent measures for territorial protection.
- Carrying out conservation and restoration activities and restoration of historical objects is also part of the territorial protection during this period.

### **1.1.2. Preservation of the ICH from 1944 to 1969.**

After WWII, the protection of CHH is regulated by Decrees and Regulations.

By **Decree № 1608 of the Council of Ministers of December 30, 1951. "Concerning the measures which the monuments of culture and the development of the museum work in the country must be taken for preservation"** (Izv., issue 7/1952) and *Instruction for informing, registration and protection of the cultural monuments*, (Izv., issue 9). / 1952), the Council for the Protection of Cultural Monuments (CPCM) was established.

In 1957 **the Institute for Cultural Monuments (ICM)** is established. **Regulations** regulate its competence in the application of the territorial protection of immovable cultural monuments (ICM).

With **Resolution №165 of the Council of Ministers of 05.08.1958** Regarding "**measures for protection of the monuments of culture and the museum work**" (Izv., issue 68/1958) the species character of the MC and the procedures for preservation through territorial protection is expanded. **Regulations for application** (Izv., Issue 71/1959) to the Decree introduces a strict regime for search, study, research, restoration and exposure of CH. Introduces a norm for determining group MC of historical and architectural-museum significance with decrees of the Council of Ministers (CoM) as a "reserve" - historical, architectural and natural. Through Decrees of the Council of Ministers territorial their protection is set out individually for each reserve in a legal document.

**Resolution № 82 of the Council of Ministers of August 1960** describes territorial protection measures with **Regulations for use and protection of the immovable monuments of culture and historical places**, (Decree №201, Izv., issue 73/1960).

Management policies for the protection of CHH are being developed with scientific, legal and physical measures and methods. Promulgated ordinances and regulations regulate all specialized activities for territorial protection of CHH.

Local authorities for the protection of the MC are 28 district historical museums.

- Legal protection in this period with bylaws builds a streamlined management system with institutions implementing territorial protection.
- Decisions for protection of the ICH are taken in the CPMC by interdisciplinary panels by specialists in history, archeology, urban planning and architecture.

#### **1.1.3. Conservation of the ICH from 1969 to 1990.**

Specialized activities such as territorial protection are regulated in *the Law on Cultural Monuments and Museums (LMCM, 1969)* and its regulations. The ICM is renamed the **National Institute for Cultural Monuments (NICM)** with branches and studios in places carrying out territorial protection. The necessary activities until the exposure of each MC are carried out through annual „State Task plans“.

- The adopted legal documents regulate the overall state strategy with procedures for the full implementation of the territorial protection of the ICH - status of the objects with determination of their territorial scope, protection regimes, development plans, design of interventions and implementation of CRW, assistance to private owners to maintain MC with low-interest long-term loans and mortgages; CHH directorates control and finance.
- A Bulgarian school of several generations of Bulgarian specialists was established.

#### **1.1.4. Conservation of the ICH in the transition period from 1990 to 2009.**

After 1990 The LMCM continues to operate with a number of amendments. The Rules for the structure and tasks of the NIMC have been generally amended. Obligations for design and implementation of CRW at the objects of the ICH are dropped. Powers remain for assessments and status, coordination and control. Its branches in the country are closing.

- In the transition period, the state does not protect the public interest in the “protection of ICH”. Closes and reduces institutions and control bodies that monitor the proper storage of ICH. Reduces the funding of the activity many times over.
- The normative texts are not synchronized in a number of laws regarding the protection of the ICH. Illegal interventions have been committed in many historic settlements.

#### **1.1.5. Preservation of the ICH with the adoption of the LCH from 2009 until now**

With the *Law on Cultural Heritage, prom. in the SG. issue 19/2009* the term "cultural monument" is replaced by "cultural costliness/value" (CC/V) for a protected subject and object. With the LCH, the species composition of the ICH is enriched with new integrated cultural real estate. **Compulsory territorial protection** is regulated by the LCA introduces protection with a **Conservation and Management Plan** and a registration regime for those authorized to carry out CRW. The procedures in the LCH and the Spatial Development Act (SDA) are bound.

## 1.2. Architectural context

AH is complex, composed of different interconnected spaces - exterior and interior, material, real and ideological projections in different proportions.

Architectural works are a synthesis of concepts, techniques, technology, various arts, through which the specific aesthetics of three-dimensionality is created. The purpose of their protection is to reveal the values of all aspects and interrelations between them, their preservation through their territorial-organization protection. The research of the stages of construction, subsequent reconstructions and CRW of an architectural object requires specific knowledge and skills for past epochs, styles, old construction technologies and materials. The activity of conservation of the AH evaluates the valuable achievements in architecture, construction, urbanism, park arrangement and archeology.

**The territorial-structural protection of the Architectural heritage includes:**

- identification and assessment of the objects of the AH with derivation of status and conservation regime, including territorial scope and protection regulations;
- the urban aspect of protection of each single or group MC /ICC, as well as the wider scope of their environment with a protection zone;
- protection of all architectural, volumetric-spatial, constructive, stylistic and artistic-plastic characteristics; the scientific and historical knowledge about the object or location of the ICH by designing and implementing the necessary interventions after comprehensive documentation and research, analysis and evaluation;
- all management measures and strategies for integrated conservation and sustainable development, including CMP / MP UNESCO Terms and Conditions;
- continuous monitoring and documentation of the condition of the AH object;
- control of legality and methodologically correct approach to protection;
- financial provision of all activities for territorial protection.
- Architecture and urbanism are a measure of the level of development of society.
- An essential part of the territorial protection is the consideration of intervention with project documentation for the CRW, preservation of the authenticity of the design and materials, stylistics, modernization and enrichment, socialization of the objects of the AH.

## 1.3. Social context

In the case of territorial protection, in addition to stabilization, it is necessary to improve the **ACCESS** to each object of the ICH, related to the cognitive process for it.

The broad context for preserving all traces of the ICH and anticipating social activities is the subject of territorial spatial planning and development.

The AH has its own symbolic system with requirements for knowledge, ideas, beliefs, moral regulation and professional ethics in public relations in the "conservation of the ICH". The categories for ethical professional conduct in its territorial protection are not defined. Internationally, the exceptions are the Venice Charter, the ICOM Code of Ethics and the ICOMOS Code of Ethics.

The social dimension of the ICH and its territorial-structural protection is:

- contributes to the identity of the nation, shapes a specific living environment;
- ICH as a basis of cultural tourism contributes to the formation of GDP;
- As research and knowledge of various fields of human activity, the ICH is the basis of international cultural cooperation and exchange.
- The ICH, as shaping the identity and the living environment, is part of the national security.

#### **1.3.1. International initiatives**

With the *Convention Concerning the Protection of the World Cultural and Natural Heritage* and recommendation for national protection of CH and NH has been introduced more complex approach to its protection and management in sustainable development.

The 21st century conservation approach is managing the broad context of the environment object of the ICH with social and economic goals related to the needs and participation of local communities. Each ICH object must be assessed in the social, economic and environmental dimensions as required by the 2007 World Heritage Committee. monuments and landmarks from the List of world heritage must have a management plan.

#### **1.3.2. Bulgarian initiatives**

The complete system of protection built from the 60's to 1990 contributes to implementation of all measures for territorial protection of each MC in the public interest.

The directive plans - concepts (DPC), developed by the NIMC, are the basis for the integration of the CIH system in the Unified Spatial Development Plan (USDP) of the People's Republic of Bulgaria (1985). These developments are embedded and further developed in a pilot project of the Association for Cultural Tourism - Cultural Corridors of Southeast Europe - Heritage: ESPRIT.<sup>3</sup>

Recognition of the role of Bulgaria in the protection of the CH is the establishment of the seat of the International Scientific Committee for Folk Architecture in Plovdiv in 1975.

VSU "Lyuben Karavelov" - Sofia is the first higher education institution to introduce

<sup>3</sup> –implemented in 2007-2008 with the support of the Government of Luxembourg, the European Institute for Cultural Routes - Luxembourg and the Ministry of Culture of Bulgaria. Presented for the first time at the Regional Meeting in Opatija by the President of Bulgaria Georgi Parvanov.

training in the protection of the AH in a superstructure master's program, preparing restorers - architects, design engineers, urban planners, landscape architects.

## CHAPTER 2

### ESSENCE OF THE TERRITORIAL PROTECTION OF CHH FROM THE SECOND HALF OF THE XX CENTURY AND THE BEGINNING OF THE XXI CENTURY

#### 2.1. REGULATORY BASE

##### 2.1.1. International legal documents and bodies regarding territorial protection

An overview of the issues of internationally produced documents of UNESCO, Council of Europe, ICOMOS, ICROM, ICOM, EUROPEAN UNION.

##### 2.1.2. Bulgarian national normative documents in the protection of CIN - legal regulation of territorial protection

###### 2.1.2.1. The territorial protection of CIH after 1944. until 1969

With Decrees of the Council of Ministers and the Ministry of Environment and Spatial Planning, Decisions of the DKSA for a number of declared as architectural-archaeological and historical reserves for the first time determined their individual overall territorial-organization protection. Areas under a special transition regime are described.

- With the published architectural, archeological and historical reserves, the Bulgarian and urban structures as a value before the international documents.
- Despite the lack of a legal framework with a law, the activity “protection of the Bulgarian Architectural Heritage” observes the level of the international methodology for territorial protection.
- The changed terms for protected objects - monument of cultural and historical place are in line with the Athens Charter and international law.

###### 2.1.2.2. Territorial protection and legal framework with the Law on Monuments of Culture and Museums - LMCM in the period 1969-1990.

♦ *The LMCM* has been adopted with Regulations for its application with described procedures for territorial protection of the ICH, carried out by the main body of the NIPC.

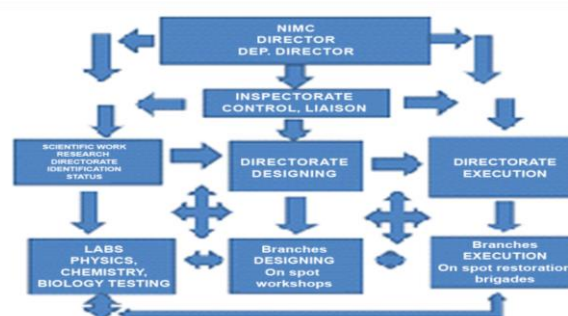


FIG. 1. Structure of the NIMC

The practice from the previous period for regulating individual territorial protection with

Decrees for new reserves continues. Joint **Ordinances of the CIC/ CC and MSA/ CAB** for protection in the architectural - historical reserves have been issued, further developing the old decrees depending on studies and new data. The ordinances set boundaries and protection zones, construction traditions, specific characteristics, protection regimes.

#### **2.1.2.3. Territorial protection in the regime of transition in the institutional framework of the activity for protection of the ICH (1990 - 2009)**

- ♦ **The LMCM** is left to operate with periodic partial amendments during this period.
- ♦ **New NIMC Regulations** with reduced competencies for territorial protection.

#### **2.1.2.4. Territorial structural protection after 2009**

Mandatory territorial-structural protection and a new methodological approach with a **Conservation and Management Plan (CMP)** of the LCH are regulated.

### **2.2. TYPOLOGY OF THE TYPES OF TERRITORIAL PROTECTION**

**Territorial protection** is the physical protection of ICH objects through all measures and activities aimed at preserving the authenticity and integrity of the material substance of AH, as well as its socialization and exposure.

**Territorial structural (spatial) protection** includes measures and activities for physical protection of the AH, their integration into development plans and policies, including CMP and the active participation of all stakeholders in its management.

- **The term reflects the latest guidelines set out in international documents for the preservation of the historical cultural landscape (symbiosis of traditions, heritage and specific natural environment), in addition to physical and structural measures and change management.**

Several definitions of areas with AH are similar, but with some differences:

- **The protected territories** for conservation of the ICH and the NH by the order of the LCH and the LPT cover the borders and the protection zones of the single and group ICC.
- **Territories with special territorial structural protection** have specific characteristics for conservation, defined by the SDA, the LCH and the Law on Protected Areas (LPA).
- **Territories with a regime of preventive structural protection** - they determine a special device mode regime under the SDA, without being declared protected areas.

#### **2.2.1. Types of objects of ICH**

The species characteristics of the objects of the NCA under the LCA cover architectural, archeological and historical sites, urban structures, garden and park art, ethnographic, industrial. The species outlines the specifics of each historical period in terms of traditional concepts, original materials and construction techniques and technologies for the creation



of architectural objects, as well as functions.

New integrated types of ICC have been defined: *cultural routes*; *cultural corridors*; *cultural landscape*.

According to the Convention for the Conservation of the World Cultural and Natural Heritage, the protected objects are: *Monument*, *Ensemble*, *Remarkable site*.

The Remarkable site is enriched as a species with new protected objects:

- **Historic area / city** (from the 1976 recommendation)
- **Historic city zone** (from the ICOMOS Washington Charter)
- **Urban heritage** (from the EU Research Report № 16 (2004),
- **Historical urban (cultural) landscape** - protection of cities

### 2.2.2. Type of territorial protection according to the kind of object of the ICH

The cultural value and type of the objects of the AH are an indicator of the admissible degree of intervention, of the obligatory activities for their physical and device protection. For object with **the highest category**, **all types of territorialspatial protection are mandatory**.



FIG. 3. Scheme for interconnection between value and price of NCC protection (author)

The price for protection is directly proportionally related to the measures of territorial device protection and the type of the object and are interrelated

#### EVALUATION - COSTLINESS / VALUE – PRICE

Scientific classification as **scientific protection** is mandatory for all objects of the AH.

Measures for public access to the objects of the AH, as well as activities promoting socialization and promotion are **social protection**.

**Technical and technological protection** includes all measures and tools for physical protection of ICH objects, knowledge of documentation, projects for interventions - development, CRW, construction, public works, biological, climatological and other monitoring activities for research, permanent storage and maintenance. Represent **the professional protection** to all objects of the AH. The **economic** dimension of the AH is



the basis for the development of cultural cognitive tourism and various economic activities.

TABLE OF MANDATORY AND REQUIRED TERRITORIAL PROTECTION MEASURES ACCORDING TO THE SPECIFIC CHARACTERISTICS OF ICC

Measures TERRITORIAL PROTECTION	PROTE CTION MODE INDIVID UAL	DEVELO PMENT PLANS SRN	DESIGNING OF SPATIAL PLANS CONCEP TS, CSP, WSP, SILHOU ETTE PLANS	INVESTMENT PROJECTS PRIORITY	AGREE MENT	APPRO VAL	SCIENTIFIC RESEARCH	CONSTRU CTION AND TECHNIC AL DOCUME NTATION	PERIODS STATE OF CONDITI ON	ABOUT RISKS AND CHANGES	PERFORM ANCE On CRW	CONTR OL specialized	FINANCING
<b>PROTECTED AREAS TYPES OF OBJECTS</b>													
<b>GROUP MC / ICC</b>													
ARCHAEOLOGICAL RESERVES	+	+	+	CRW, exposure socialization,	+	+	+	+	+	+	+	+	From public funds
HISTORICAL SETTLEMENTS	+	+	+	For intervention of the ICC	+	+	+	+	+	+	+	+	From public funds
COMPLEXES	+	+	+	For interventions	+	+	+	+	+	+	+	+	From public funds or co-financing
URBANISTIC	+	+	+	Infrastructure	+	+	+	+	+	+	+	+	From public funds
CULTURAL LANDSCAPE	+	+	+	Landscaping, public works	+	+	+	+	+	+	+	+	Public funds, budget
PARK AND GARDEN ART	+	+	+	Landscaping, public works	+	+	+	+	+	+	+	+	Municipal funds
CULTURAL ROUTE	+	+	+	Infrastructure	+	+	+	+	+	+	+	+	Public and private funds
CULTURAL CORRIDORS	+	+	+	Infrastructure	+	+	+	+	+	+	+	+	Public funds
<b>SINGLE</b>													
ARCHAEOLOGICAL MC / ICC	+	+	+	All interventions	+	+	+	+	+	+	+	+	From the budget
ARCHITECTURAL AND CONSTRUCTION MC / ICC	+	+	+	All interventions	+	+	+	+	+	+	+	+	From owners
ARTISTIC MC / ICC	+	+	+	CRW, technology interventions	+	+	+	+	+	+	+	+	From owners
INDUSTRIAL and ETHNOGRAPHIC	+	+	+	All interventions	+	+	+	+	+	+	+	+	From owners
<b>CATEGORY:</b>													
* of world importance	+	+	+	All interventions	+	+	+	+	+	+	+	+	From the budget and UNESCO
* national importance	+	+	+	All interventions	+	+	+	+	+	+	+	+	From the budget
* local significance	+	+	+	All interventions	+	+	+	+	+	+	+	+	From the owner
* ensemble significance	+	+	+	All interventions	+	+	+	+	+	+	+	+	From the owner
* for information	+	+	+	All interventions	+	+	+	+	+	+	+	+	From the owner
<b>BUFFER ZONES / SECURITY</b>	+	+	+	Infrastructure	+	+	+	+	+	+	+	+	From the owners municipality
<b>SENSITIVE ZONES</b>	+	+	+	Infrastructure landscaping	+	+	+	+	+	+	+	+	From the owners municipality

FIG. 2. Scheme with the territorial protection, according to types of objects of the ICH (author's)

**Territorially structural protection** is:

**The conservation regime** is obligatory for all assessed objects of the ICH.

**Development spatial plans with specific rules and regulations (SRR) to them** for urban MC/ ICC to preserve specific characteristics, spatial, architectural and stylistic construction of their traditional environment, which are not subject to protection with regular structural indicators.

**Design, coordination and approval of spatial plans** for all protected areas of single and group MC/ICC with structural intentions. A survey with silhouette plans in working development plans (WDP) for combining newly proposed construction with the ICC is mandatory. All structural development intentions concerning protected areas must be agreed upon in accordance with legal procedures. Approving them has always been the prerogative of local administrations.

**Design, coordination and approval of documentation (investment initiatives and intervention projects).** From the species definition and the conservation regime, the intervention is presupposed - conservation, reconstruction, adaptation. Layers from different periods are distinguished on the basis of scientific research with hypothetical

restoration to clarify the development of a object with lost parts.

**CRW projects are mandatory for all ICH objects.** An investment project is approved by the local administration for each intervention in an ICH object, after coordination with the authorized ICH conservation institution.

**Implementation of CRW projects and interventions for adaptation of the MC/ ICC** are strictly executed architectural and construction works at a high professional level.

**The control over the implementation and execution of all projects** is territorial protection for all types of IMC/ ICC. Control is effective when it is preventive.

**Funding** for territorial protection measures needs to be provided for all ICH objects for continuous maintenance. The territorial protection of the objects of category "world and national importance", as well as of those state property is financed from the state budget.

**Monitoring** is the activity of professional monitoring:

- the influence of technological, physico-chemical, biological phenomena on the condition of the objects of the ICH by indicators;
- the condition of the ICH objects: through scientific research, through documentation, to anticipate changes and interventions;
- to measure the integrated conservation of the ICH object in the structure of the territory and the processes of economic development;
- the risks to the preservation of the authenticity and integrity of the MC / ICC;
- the access, maintenance, security and management of the object of ICH.

Monitoring is carried out on all objects of the ICH. **For objects of world and national importance, permanent monitoring is mandatory.**

**The integrated approach to territorial protection** begins with **the conservation plan** developed by ICOMOS. **The Directive Plan-Concept (DPC)** is born with the Conservation Plan as a development concept for single and group MCs with category "national importance" for protection and socialization in Bulgaria.

The integrated **Conservation and Management Plan (CMP)** is a symbiosis of the international ones instruments Conservation Plan (1982) and Management Plan (2007).

## **2.3. SELECTION OF EMBLEMATIC EXAMPLES AT HOME AND ABROAD**

### **2.3.1. Borders of the Roman Empire - Hadrian's Wall and Antonine's Wall in Great Britain and the Recia Shaft in Germany**

The remains of the Roman limes consist of:

A/ Adrian's wall; B/ Upper German and Rhetian Limes; C/ Antonin wall

#### **2.3.1.1. ADRIAN WALL MANAGEMENT PLAN - frontier of the Roman Empire<sup>4</sup>**

Each 5-year period of MP is analyzed and tasks for the next one are outlined. After defining the tasks, **an action plan** related to funding is prepared.

**Funding** is provided by the UK national system. From the analysis of the existing situation, the development of the urban planning coordination in the territorial scope,

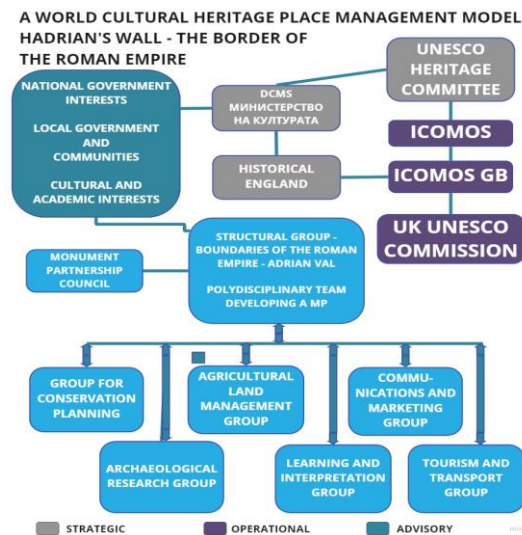


FIG. 4. Scheme of the Adrian wall control model, proposal in MP

From performed interventions after assessment, goals and problems have been deduced.

The second part of the MP describes the provisions for protection, economic development, interdisciplinary teams, tools. Stakeholder relationships are described in time and sequence diagrams. The scheme presents a preliminary design value of the planned future interventions. Ways of financing are suggested.

- Responsibilities for the preservation of the World monument in England are shared by all authorities and levels, to provide funding, maintenance, operation, management,

### 2.3.1.2. PLAN OF MANAGEMENT ON THE BORDER OF THE ROMAN EMPIRE in Germany.

The first MP (2005–2010) determines the goals for conservation of WHS with tourist performance. The second MP (2010–2015) is being developed on the basis of an analysis of the situation, unfulfilled tasks and goals of the initial MP. In the third MP (2015–2020) the limes of the federal states are coordinated in management and development through the German Limes Commission and shared responsibility with the **Limes Foundation**.

### 2.3.1.3. MANAGEMENT PLAN of the Antonine Shaft in Scotland

MP covers periods of five years from 2007. In the **buffer zone** as a landscape for protection of visual perception, requirements for land use are derived.

Included in the MP are strategic, political and guiding documents such as:

- Additional **planning guide** adopted by all local authorities.

<sup>4</sup>- MP on the wall of Hadrian - the border of the Roman Empire; <http://whc.unesco.org/en/list/430>

- **Interpretation plan** - strategy with projects for physical and intellectual access.

The Conservation Directorate reflects strategic and local development plans in the MP

### 2.3.2. Neolithic monument in Orkney (Scotland)

The remarkable site of the World Orkney's Neolithic World Heritage Site - 4 Neolithic sites in Scotland - is combined with the Brodgar Nature Reserve on World Monument.

**Buffer and sensitive zone** (regulated by the MP) outline areas for prevention of adverse interventions. The individual MP of the CH and the NH are collected in a common five-year plan for combining cultural and natural values such as the Historical Landscape; providing access to them; solving problems of climate conditions, sustainability and ecosystem management; with proposed protection measures. **Monitoring** of the Remarkable place and the buffer zone is reported to UNESCO every six years. An additional **planning guide** is attached - **regulations with requirements for protection** of OUV and policies for territorial spatial planning with eligible activities.

- MP ensures sustainable management of WHS, by balancing measures for territorial protection and conservation of biological diversity, solving social and economic problems.



FIG. 5. Plan of Orkney Island, Orkney's Neolithic Heart site and its buffer (red) and sensitive area (blue) The World Heritage Site, the Buffer Zone, and the Sensitive Area

### 2.3.3. BOYANA CHURCH

The architectural and artistic restoration and stabilization of the Boyana Church returns its closest to the original architectural appearance from and since 2006 it acts as a museum at the NHM. The report - first part of the CMP is structured in two parts:

#### I. DESCRIPTION AND SIGNIFICANCE OF single ICC

#### II. ANALYSIS, EVALUATION, CONCLUSIONS AND GUIDELINES

The Report sets the tasks for the second part of the **CMP**: management objectives; short-term, medium-term and long-term plans and projects with operational actions, managers, sources of funding, integrated conservation with measures to stakeholders; general conservation plan; improving the conservation regime; information base for CH,

continuous monitoring and control.

#### 2.3.4. THE OLD TOWN OF NESSEBAR

CMP of the Old Town of Nessebar has a period of 20 years (2012-2032) and registers negative results of illegal interventions and loss of characteristic silhouettes, scale and atmosphere. CMP includes five-year and one-year work programs, discussed, agreed under the LCA, but not adopted by the Council of Ministers.

- The CMP provides high standards with planned actions for sustainable development, definition of responsibilities and mechanisms for accumulation of financial resources.

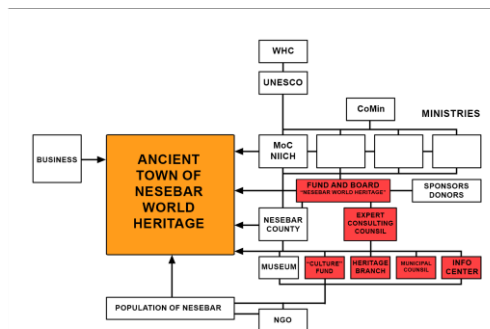


FIG. 6. Organogram - proposal of the CMP of Old Nessebar for management

- The CMP offers a system for monitoring, control and management bodies with a National Fund and a board, with the participation of stakeholders.
- The implemented illegal construction in Nessebar proves that it is essential to control and regulate the relationship between new and old construction with silhouette studies to preserve the characteristic visual views.

#### 2.3.5. CITY OF WEIMAR - "Classic Weimar"

MP of "Classic Weimar" has a validity period of 12 years from 2013 to 2025. MP brings main, border and buffer zones with observation corridors, which are a means of protection

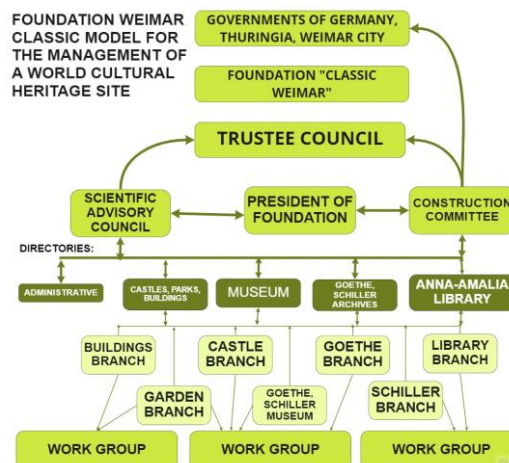


FIG. 7. Model of structure and relationships in the Classic Weimar Foundation (my vision)

through silhouette study of volumetric-spatial parameters of the MC, a land use plan and a municipal development plan.

The measures in the MP are integrated into urban planning policies, with supervision, financial resources, plans and programs for protection by the Foundation for the Implementation of the MP.

### 2.3.6. MONT SAINT MICHEL

The island of Mont Saint Michel and its Gulf was inscribed on the World Heritage List in 1979. The bay is estimated as a world NH - **bio-reserve**.

In 2013 in a project for the MP of Mont-Saint-Michel and its Gulf (Report part one of the MP) it is proposed to divide the protected area into three geographical circles, partially overlapping with the classification of monuments:

1. **The abbey, the fortifications and the island** form the first circle.
2. The second round is **the Place** with infrastructure facilities with access to the island.
3. The third round includes **the bay**: natural heritage, landscape area 2012.

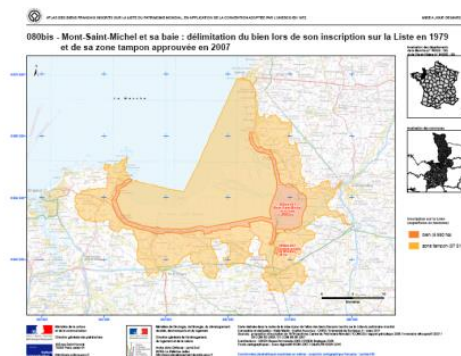


FIG. 8. Zoning in MP according to the values of Mont Saint Michel -  
The island, its bay and the coast

Different systems of protection, responsibility, management have been introduced for these circles. In the MP project, the strategy is the interconnection of tourism (economic goals) with the territorial protection of heritage and the environment (conservation goals).

- Establishment of a **national public institution for management** in the public interest – an administration free from local and regional authorities.
- Abbey protection management is proposed to CMN as specific.
- The report (MP) highlights problems with duplication of procedures, legal inconsistencies and the establishment of a joint Governance and Tourism Council of the CH and NH.

### 2.3.7. THE OLD AND THE NEW CITY OF EDINBURGH

The main goal of MP of the Edinburgh Old and New City is the territorial protection and



tourism development in the 21st century, which are subject to constant monitoring. **Heritage Lottery Foundation** raises funds to preserve the Site of world CH. 80% of the funds raised are provided free of charge for part of the CRW carried out under the Financing Program. The term of validity of the MP is five years.



FIG. 9. Plan of Edinburgh - the border of the world monument with conservation areas

A **Toolkit for monitoring** the state of conservation has been developed as part of the World Heritage management cycle with an annual monitoring report.

The objectives of the MP are achieved through a number of stakeholders and organizations, coordinated through an **action plan** - a tool for strategic coordination.

#### 2.3.8. „THE HISTORICAL CENTER OF SAINT PETERSBURG AND RELATED MONUMENTS OF CULTURE"

**St. Petersburg**, consisting of the historic core of the city, grand parade residences, fortification system, farms, villas, settlements united by radial roads, has preserved its integrity and integrity.

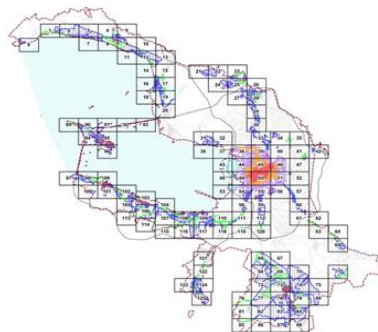


FIG. 10. Scheme of the protected territories of the cultural heritage  
of St. Petersburg - the protection zones by law

With the **Master Plan** (2005, 2013) a Monitoring system of the state of MC and their environment. Prepared by the MP of the World Monument legally sets out requirements such as a ban on new construction; a ban on changing the historical urban structure of the streets and the silhouette of the neighborhoods; restrictions on the reconstruction of the MC; the new construction is a means of **urban restoration** of the integrity of an ensemble.

- Although MP of the St. Petersburg has not been adopted, its continuous maintenance and Comprehensive conservation have contributed to the preservation of OUV, increasing its

value.

- Establishment of an **independent** control for compliance with the conservation regime.
- Priority is given to inspections with risk assessment - prevention + high professional status of the inspector. **Periodic written reports** by a responsible inspector to the Control Institution or an extended board have been introduced.

#### 2.4. Systematization, achieved results, positive sides, flaws and proposals.

*Listed in Table of FIG. 11 (page 46)*

- The world remarkable site "Borders of the Roman Empire" is a European cultural route. Each country has developed a MP for the identification, protection, conservation and sustainable use of cultural tourism resources. Internationally coordinated plans ensure uniform interpretation and presentation.
  - The World Monument "Borders of the Roman Empire" through those provided by the MP integrated activities has been turned into a "**shared cultural space**" for knowledge, education, entertainment, tourism and community building.
  - The MP has implemented a continuous process of territorial protection with the main goal of integrated conservation and presentation to the public of the OUV, with a series of MP. Succession and continuity are achieved by updating the tasks for each subsequent period, in accordance with the conclusions of the monitoring reports.
  - The 5-year term of the MP provides a better opportunity for reporting and efficiency, analysis of the situation, revision, continuity and updating of the Plan.
  - Measures for its protection have been determined in the MP of the World Heritage MC with a specific natural environment, such as a **historical cultural landscape**.
  - Defining a **buffer/ protection zone with a regulation** is for conservation of volumetric the spatial parameters and characteristics of each landmark site.
  - The defined "**sky line**" as a **buffer zone** in Edinburgh and St. Petersburg stops the growth of vertical construction in ensembles.
  - Defining **visual axes, silhouettes and panoramas** for protection as a **conservation regime**, helps to postpone them with procedures in all development structural plans, to comply with urban projections with their protection.
- Defining a "**landscape zone of influence**" (as in the vicinity of Orkney, Weimar and Mont Saint Michel) is a good regulation for the protection of the cultural landscape.
- A **protection (buffer) zone** of a group monument in France, regulated with a perimeter of 500 m from its borders, with requirements in the by-laws, is an administrative measure for a **preventive conservation regime**. A priori rationing of the protection zone of group



ICCs should be applied to declared group ICCs.

- A well-established and functioning **monitoring and control system** (Orkney, Weimar, Edinburgh, St. Petersburg) facilitates continuous monitoring.
- The practice in almost all states of the convention is to establish a national public independent organization for overall protection with public funds.
- Through **the Limes Management Foundation** in Germany, which is responsible for research, operational responsibility and funding of protection and management activities, a unified leadership of the world's landmark has been achieved.

An excellent management practice is **the Classic Weimar Foundation**. This form is highly professional, democratic and transparent with fundraising, research, territorial protection, monitoring of the ICH.

- It is good practice to **license professional competence** in the field of ICH conservation in Germany by taking examinations by the applicant.
- The Scottish and English example of tax credits from landfills contributions to finance territorial protection projects is good practice.

In France, a system of tax relief, rescheduling and **financial relief** is a good way to protect the CH. State support with 40% funding of the necessary CRW for each monument is an incentive for protection. Measures for unsupported MC with their expropriation is a preventive norm against destruction.

- The organization established with the MP for the object of the World Heritage with an interdisciplinary professional team on site provides daily supervision of its protection, presents the knowledge of cultural tourism. This proves that **the MP contributes to the decentralization of both conservation activities and competencies**.
- The protection of St. Petersburg is also due to the established **monitoring system control and prevention** by highly qualified professionals.

#### 2.5. Summarized conclusions serving to form a methodology

- **MP covers material resources, human resources, spiritual resources, time resources and financial resources and the level of their organization.**

Each MP formulates **basic** and **operational goals** and **objectives** to achieve the goals.

- In order to protect the structural context, it is necessary to determine a protection zone with a regulation - prescriptions with mandatory requirements for protection of visual axes, silhouettes and panoramas, scale, regulation of "landscape zone of influence".
- **Monitoring** of the condition of the objects and the environment is carried out at all stages of planning, design and implementation and is noted in the documentation. To

monitor the processes in their condition, to perform a **comparative analysis** of data for appropriate development and investment decisions. The minimum methods needed to establish the condition are **field research, documentation and expert evaluation. Scientific architectural, archaeological, engineering and technological studies** determine the characteristics of the ongoing processes at the objects of the ICH.

- **Funding** is an important component for the implementation of the MP and for territorial protection of the ICH. To create a national fund to generate remedies and responsibility shared by all authorities provides funding, management, monitoring and control.

- **A professional interdisciplinary team** is responsible for the implementation of the activities in the MP, and the MP Foundation is a good form of protection of the CH.

## **CHAPTER 3**

### **CURRENT STATE OF THE TERRITORIAL-ORGANIZATION PROTECTION OF THE CHH FROM THE END OF THE XX CENTURY TO THE PRESENT**

#### **3.1. OVERALL PICTURE**

##### **3.1.1. International methodology**

- In order to preserve the national historical and natural landmarks, it is necessary to integrate them into the social and economic life in order to achieve continuity, harmonious succession with civilizations that existed in one place during different historical epochs.
- Preservation of the authenticity of the AH with traditional construction and artistic materials, technologies and crafts, also through urban and regional planning with provision of buffer (protection) zones around the protected areas.
- To envisage measures for successful functional integration of the AH in the modern urban environment, without losing its traditional qualities.

**Conservation plans include basic information that keeps you going for a long time term forecasts.** Of particular importance for the protection of the CH are the principles:

- for equal dignity and respect of all cultures;
- to complement each other's economic and cultural aspects of development;
- for sustainable development;
- for equal access;
- the relationship between tangible and intangible values of culture.
- **the principle of transparency in decision-making**, strategies and projects.
- Continuous **constant observation / monitoring** for MC OUV maintenance.
- the need to prepare impact assessments of all developments and investment projects on OUV of World Heritage objects.
- The introduction of a new measure for territorial protection with a Management Plan

rethinking the importance of AH with the involvement of the local society in protection.

- **Integrated conservation** as a term includes the "protection" of all monitors the preservation of all elements of the cultural and natural resources of a place in their interaction and related intangible values and their integration into a sustainable structure of the territory, with responsibility of local authorities and citizen participation.

### **3.1.2. State of territorial defense in Bulgaria**

#### **3.1.2.1. Regarding the Conservation Regime**

- Most of the objects of the ICH have an incomplete conservation regime so far.
- Legal protection is based on the principle of determining important **visuals perspectives** that form a protection zone. In practice, there is no protected object of the ICH with visual prospects for conservation.

#### **3.1.2.2. Regarding the Device Plans with Specific rules and regulations (SRR)**

According to the LCH, it is obligatory for the territorial scope of the ICC to be reflected in the cadastral and device plans. In practice, a protection zone of single ICCs (under Article 79 of the LCH) is not included in the plans, as well as SRN.

#### **3.1.2.3. With regard to the design, coordination and approval of structural plans**

Not all declared MCs (obligatorily under Ordinance №5) are entered in the cadastre, which leads to loss of protected objects in case of non-compliance with the provisions of device plan with their conservation. The obligatory inspection with CHKZSP/ WDP for intervention in the MC/ICC does not apply. An example of this is Old Nessebar.

After 2011 an amendment to the LCH introduces a two-stage conciliation procedure, in which NIICH gives an opinion, and the letter of agreement is issued by the Ministry of Culture, signed by the Minister, after consideration by SECCICH within two months.

With the Amendments and Supplements to the LCH in Art. 17, para 1, item 1, para 3, para 4 and para 5 in 2016 the conciliation procedure becomes three-step, with an extended deadline of 4 months, and for ICCs with a category of "local significance" and lower, rights are granted at the local level three members of architects entered in the public register of the Ministry of Culture, without expert experience.

#### **3.1.2.4. With regard to the design, coordination and approval of documentation (investment initiatives and intervention projects)**

From 1992 to 2011 design of investment interventions on the objects of the ICH can be performed by all freelancers with full design right ability, regardless of their knowledge and experience in the field of "conservation of ICH".

With the LCH and Ordinance N-3 of 2011 of the MiCu for the public register of those

authorized to perform the CRW, including design, minimum requirements for competence in the professional field of "conservation of ICH" are derived.

The coordination of the investment documentation for protected territories until 2009. is under the procedure of LMCM, after 2009 under the procedure of LCH.

After 2011 the coordination is carried out with a two-stage ruling by NIICH and MiCu.

After 2016 the coordination of investment projects for ICC, with category "local significance" and lower is carried out by a three-member architect appointed by the mayor in the municipal administration (of the determined economic regions under the RDL) with a certificate of the MiCu under Art. 165 LCH. The coordination is only for the "Architecture" part. Approval after 1992 of the investment projects for intervention in the MC is one of the main architect in the municipality, according to Law on Territorial and Settlement Organization (LTSO) until 2001/ law on spatial planning (LSP) after 2001.

#### **3.1.2.5. Regarding the implementation of CRW projects and interventions under the objects of the ICH with the performance of protection activities**

CRW on MC until 1992 are carried out only by the Enforcement Directorate at the NIMC.

After 1992 the implementation of the CRW is outsourced to construction companies without being required of which specific qualification in the application of this territorial protection.

After 2011 in Art. 165 of the LCA regulates the activities for conservation, restoration and adaptation of the ICC, as well as construction supervision, to be carried out by persons (or under their direct supervision), entered in the public register of the MiCu.

#### **3.1.2.6. Regarding the control over the implementation and enforcement of all projects and the protection of the ICH**

During the operation of the LMCM, the control over the implementation of the projects for intervention on the CHH is achieved with a monthly methodological guidance of the objects by the designers. Control over the entire protection activity is carried out by the Inspectorate Department at the NIMC and by the Control Department at the MiCu and by the directorate „CHH“. The specialists of NIMC are charged with responsibilities as heads of entire settlements, to monitor on a monthly basis the observance of the investment projects and the implementation of the envisaged CRW and unregulated interventions on the objects of the ICH. Acts and penal decrees are issued for the violations of the territorial protection, signed by the chairman of the CC or the ONS / the Minister of Culture later.

In the transition period after 1990. until 2009 control is not exercised because there is underfunding of the control body - the NIMC Inspectorate.

The LCH establishes in the MiCu - General Directorate "Inspectorate for Conservation of

Cultural Heritage" (GD "ICCH") with inspectors common to all movable and immovable CC, who also prepare conciliatory statements signed by the Minister.

#### **3.1.2.7. Monitoring**

In the period 1969 - 1990 the settlements and the regions have appointed NIMC officials, with imputed periodic monitoring. The monitoring is carried out obligatorily during regular surveys, during status surveys, preparation of development and investment projects. Scientific approach as monitoring documents are DPC for ICH objects. Until 2009 the NIMC Inspectorate also monitors, that is

- **control and monitoring activities are combined.**

During the operation of the LCH, there is no body in charge of continuous monitoring of the ICH objects. The mechanism set in Art. 71 to Art. 77 of the LCH for incidental monitoring of an object at risk is primarily the responsibility of the owners.

- **The LCH does not provide for a system for periodic continuous monitoring of the ICH objects, nor are there any direct persons responsible for its implementation.**

#### **3.1.2.8. Financing**

Until 1990 the territorial protection of the ICH is financed through the state budget according to planned estimates for all activities of the study, awarding status, design and implementation of all CRW, exposure and socialization of ICC.

- In the 80s of the twentieth century, low interest rates were granted by law for a long time term loans against mortgage for projects and CRW under IMC - private property.
- During this period, the territorial protection of the ICH was systematically underfunded. After 2009 State funding is granted only for some objects of category "world and national importance", which are state or municipal property. For ICC, private property of "local importance" and a lower category of responsibility to finance the protection is charged entirely to the owners. Funding for European projects is for tourism activities and attractions.

#### **3.1.2.9. Conservation plans**

Territorial protection as a conservation plan in Bulgaria was not covered until 2009. **DPC** for single and group MCs of "national importance" are born with **conservation plans**. They make a connection between the conservation and the development activity, they successfully influence the practical urban decisions in the big cities. Part of the CHH in the General Plan - Sofia, 2007-2009, can be considered a Conservation Plan.

#### **3.1.2.10. Conservation and management plans (CMP)**

CMP according to the LCH, territorial-structural protection is mandatory for:

- **Immovable cultural costliness/values included in the Indicative List of the cultural and natural heritage of the Republic of Bulgaria - 13 in number.**

- **Archaeological reserves, which are 33 in number.**

- **Group immovable cultural costliness/values of national importance, incl.**

**The historical settlements - 13 in number, 139 group ICC - complexes, monasteries and archeological objects, in most cases "historical cultural landscape".**

- **The single immovable cultural costliness of national importance and in the cases when they are granted on concession.**

- **The monuments inscribed in the List of World Cultural and Natural Heritage before 2007, which in Bulgaria are 7 in number.**

So far, CMP for "Old Nessebar" have been developed in 2012 and Reports on the condition of the world monuments "Kazanlak Tomb" and "Boyana Church", as well as the CMP for the Ancient part of Sozopol, but it was not agreed and approved.

### **3.2. Active factors**

- **the individual cultural and historical value and significance of the MC / ICC;**
- **the state of preserved authenticity and integrity of the ICH object;**
- **the built anthropogenic environment of the AH object and the interrelations in it;**
- **the established system for protection management with professional potential for decision-making for protection of AH, with provided financing and control;**
- **the natural environment of the AH object and the interrelations between them;**
- **the characteristic natural phenomena and climate of the place;**
- **preserved archival documentation and documents, information and historical facts for the object of ICH and its environment, incl. publications;**
- **determining future socialization - economic aspects, advertising, benefits;**
- **the attitude of the society as policies for protection of the cultural resource;**
- **available financial resources;**
- **interdisciplinary team of professionals with high morals and knowledge;**
- **continuous support with interdisciplinary monitoring and accountability;**
- **level of adequacy in determining and applying legal protection.**
- **Preserve the original in any reversible intervention.**
- **The professionalism and morale of the interdisciplinary team in implementation of the territorial structural protection of the AH is essential.**
- **Access to culture is a proclaimed civil right of every person.**
- **The popularization of AH - through cultural policies - magazines, movies, books.**

### 3.3. Problematic situations

In the period 1970-1990 the protection of ICH is with clearly defined subjects and powers mainly handed over to the specialists, without the active participation of the owners.

In the LCH, **the administration** of the Minister of Culture prevails.

Implemented territorial protection of ICH objects through project financing under European programs it does not always have good results.

- **There is no legal obligation to own property as a maintenance obligation.**

**There are no measures and sanctions for inaction in the maintenance of the ICH site.**

- The legislative texts in the LCH and the Ordinance on CMP are comprehensive for its elaboration. But no CMP has been processed and is not implemented as planned through it territorial structural protection.

#### **Contradictions with internationally produced documents**

- The introduced concept of “**immovable cultural costliness**” for a protected object of the ICH overlaps with the concept of “**cultural value**”. Bulgaria has signed *the Convention Concerning the Protection of the World Cultural and Natural Heritage*, without introducing the term "monument" of culture (MC), does not establish foundations, has not introduced monitoring.

#### **Inconsistencies and non-synchronized norms in the legislation**

- With the change in the LCH of the status, number, powers of the NIMC, its importance as a major professional body in the protection of the ICH has been taken away.
- Territorial protection financing of monitoring, design and implementation of CRW is imputed to the responsibility of the owners, without incentives for those responsible.

#### **Excessive administration**

- Three-stage procedure of coordination with NIICH, three municipal members and MiCu.
- The approval period of 4 months is a long period for administrative ruling.

#### **Discrepancy in the application of legal and territorial protection**

- Declared MC/ICCs are not updated. The deadline for their final assessment under the LCH has expired. GICCs do not have a protection zone and protection regulations.
- The norm in art. 112, para 2, item 8 of the SDA for research with obligatory working development plan (WDP) is not observed, as well as coordination in 4 months.

#### **Lack of / or insufficient professional competence**

- Design at the structurally and investment level by designers without knowledge and experience in the territorial defense of AH leads to inaccurate interventions, loss of value.
- The LCH does not accept requirements for builders - contractors of the CRW for



specialized knowledge and skills for ancient technologies at the objects of the AH.

- Lack of specialized laboratories and staff for authenticity research.
- With the LCH, approval of CRW projects on ICH objects becomes the prerogative of only the chief architects in the municipalities, without requiring specialized knowledge from them.
- The regime for professional competence in protection of ICH after 2011 is registration and nontransparent. Proving only 5 years of participation in a team, without proven results and contribution, is an insufficient requirement for experience and knowledge.
- **The Code of Professional Ethics** in the territorial protection of ICH has not been issued.

#### **Lack of permanent and regular territorial protection measures**

- The lack of up-to-date and comprehensive protection regimes and prescriptions affects the predictability of decisions in the investment and coordination process.
- The financing of the CRW after 1990 has been drastically reduced, the planned provision of activities for continuous territorial protection of AH - monitoring has been terminated.

#### **Insufficient, untimely and lack of preventive control**

- The LCH gives powers of control to DG ICCH, but for illegal interventions the powers belong to the DNSK. The procedures are cumbersome and long.
- Each inspector from DG ICCH exercises control over the CC of the movable and immovable CH at the same time, without all the necessary training and expertise.

#### **Lack of a long-term national strategy for the conservation of ICH**

- A comprehensive national strategy for the protection of the ICH with an authorized national institution for permanent maintenance and financing has not been developed.
- No national fund has been established with permanent funds to finance consecutive activities of the territorial protection of the ICH.
- The introduced deadlines for the preparation of CMP cannot be met for any of the listed cases, except for the single ICCs granted on concession.

#### **3.4. Summarized conclusions serving to build a methodology for Chapter 4**

- Personnel and numerical collapse of NIICH - without powers under LCH as a research and methodological center for protection and monitoring of ICH;
- LCH does not provide full control, monitoring of all decisions in case of interventions on the objects of CH for obtaining the final methodologically correct product.
- No modern financial and organizational instruments have been created to ensure the overall protection of the AH;
- There is no system for distinguishing the staff with knowledge and experience.



- The registration regime in the public register does not bind the registered with the responsibility for preserving the authenticity of the ICH and applying good practices.
- There is a lack of independent, professional control and **prevention** for protection of ICH
- The CMP should be treated as a document for constant protection and monitoring.
- The potential of the CH as a resource of cultural tourism is not used industries, social activities, an element of sustainable spatial planning.
- Lack of legal incentives for bona fide owners and users.
- Lack of management to recover funds from the operation of the CH object.
- Undeveloped infrastructure at the CH sites hinders access and socialization.
- There is no permanent resource in the National System for Financing the Continuous Protection of the IAC to ensure its protection in the public interest.
- The protected area should have a structural regime of protection and urban restoration of the planning structure, of lost elements of the urban landscape, scale, rhythm, silhouette, visual communications, spatial relationships.
- The management of the ICH should be transparent in the public interest.
- The CMP provides constant monitoring, responsible control for interventions, for a methodologically accurate product by a team with professionalism and responsibility.
- Personal professional responsibility and report on the control of the protection of ICH.
- Ensuring high professionalism in long-term management **with professional cultural management** in the conservation of the ICH.

## CHAPTER 4

### METHOD FOR THE APPLICATION OF TERRITORIAL PROTECTION OF CHH OBJECTS, INCLUDING CONSERVATION AND MANAGEMENT PLANS

#### 4.1. Conservation model proposals for the respective types of CHH objects - scheduling and typological frameworks, conservation activities, participants, etc.

ICH conservation technology includes actions by interdisciplinary teams for research, ongoing monitoring, scientific, technical and creative solutions for planning and designing various interventions, support and presentation.

The action plans should include all types of protection, except CRW, socialization and access, fire safety, security system, emergency protection, environmental supervision.

*Fig.12. Sample plan on page 48*

The ownership of the monuments of the ICH should be defined in the law as two types - **material and intellectual**. At the privately owned objects to derive goals and instruments for territorial structural protection, with consistent

- policies for the evaluation of the cultural resource as a spiritual and economic

resource of the society and

- policies for specific conservation activities.

For each MC/ ICC the formula will have a different expression, according to

### VALUE - INTERACTION - RELATIONSHIPS - SOLUTION

### ECONOMY - ORGANIZATION - PLAN – FINANCING

- For significant ensembles of AH in the cities to propose a model for financing programs for facade restoration. The municipalities plan to set goals and practices for protection with % of municipal funding from the invested value for the CRW.

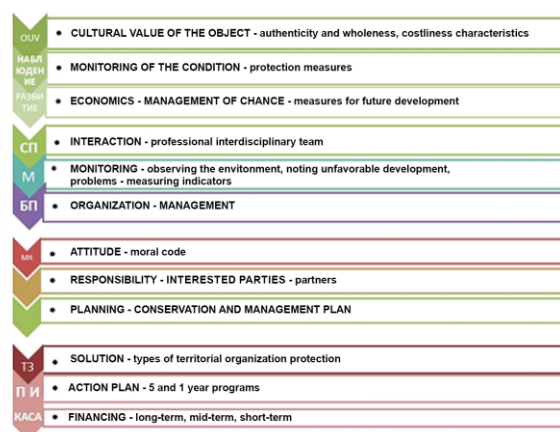


FIG. 13. Model of organization of conservation of a specific object (author's scheme)

#### ● Proposals for additional measures for territorial protection:

- Each municipality to define the "**shared cultural space**". To define traditional functions and intangible, aesthetic, historical, scientific, social and spiritual values, to preserve the **specific spirit of the place**.

- To carry out continuous monitoring at certain stages of the objects of global, national and local importance by control bodies on schedule.

- Establish local Councils with NGOs for the protection of ICH with oversight rights.

- Stakeholders in the protection of AH to commit to **Ethical standards**.

#### 4.1.1. CONSERVATION MODE

I propose to prepare an update of all **declared** MC /ICCs, with a final assessment and regime, as well as the protection regulations for all ICCs.

- Define a protection zone for the group ICCs (such as Article 79, p. 4 of LCH, SICC).
- For out-of-town group ICCs, the protection zone should be 100 m around their borders.
- Visual views with revealing characteristic panoramas of objects of "global, national and local importance" to be postponed graphically in plan and silhouette.

#### 4.1.2. Development spatial plans and specific rules and regulations to them

I propose that the protected territory of group ICCs in the Detailed Urban Plan be regulated

by law with **specific rules and regulations (SRRs)**, which reflect their **protection regime**, for subordination of new construction to the volumetric-spatial parameters of the ICH objects with restrictions on size, type of roofs, scale .

#### **4.1.3. Design, coordination and approval of development plans and project investment documentation for interventions**

When designing a detailed urban plan in protected areas, the obligatory study with the WDP should regulate the overall protection of squares and street directions, with a volume-spatial completion, uniform ground floor design, determination of places for advertising and inscriptions, color schemes and materials, places of memorials, urban design, movable objects. For proper methodological design in protected areas, designers in the public register to sign a code of ethics.

Coordination as a procedure should be in the prerogatives of NIICH, after increased staff and professionalism. The deadline for ruling on sites of world and national importance to be 2 months, for other sites - 1 month and to be agreed by the Expert Council. All decisions to be published on the website of the institution.

I propose that the procedure for approving an investment project for single ICC be shortened. After a co-ordinating decision of the Expert Council of NIICH on single ICC, the chief architect of the respective municipality to approve the project after a decision only by the fire brigade and the operating companies.

#### **4.1.4. PERFORMANCE**

Introduction of mandatory monitoring for gradual acceptance of performed CRW, with a description of the activities performed by the author of the project with a detailed description of replaced elements or technology from those provided in the project.

#### **4.1.5. FINANCING**

- Ensuring sustainable financing through:
- Legal norms for granting long-term low-interest loans to private owners for the CRW and maintenance at the objects of ICH.
- Established **permanent fund** for the CRW of silhouettes in group ICCs.
- Establishment of a **National Fund for financing** the activity of conservation of the ICH with **Lottery** and VAT funds - 20% of all transactions with ICC to go directly to it for the CRW against a mortgage, and the refund of VAT after repayment of the loan.
- Deductions from the business using the ICH objects for tourism and films.

#### **4.1.6. MONITORING**

Monuments of world importance must have a personally responsible interdisciplinary team

of all specialties, which will conduct quarterly monitoring with a status report and proposals for intervention.

Those of national importance to have a personally responsible architect-restorer and, depending on the type of ICC, an accompanying specialist - artist-restorer, archaeologist, designer in case of relevant problems. The person in charge should submit a status report every six months with a proposal for the necessary interventions. For each settlement with objects of the ICH, a responsible person should prepare an annual status report with photo documentation and graphic materials, if necessary.

The monitoring should be performed by experts of the organization for protection of the ICH with specific prescriptions to the owners and the administrative bodies with deadlines and control for their implementation. For the world monuments to apply innovative methods for **continuous monitoring** by scanning sensor devices.

#### **4.1.7. CONTROL**

DG,,ICCH“ to be divided into two divisions for movable and immovable CH in two institutions. Commissions to visit the ICH objects twice a year with the participation of: ICH conservation control inspector, monitoring expert, experts from local authorities.

To carry out a procedure in the law for drawing up a protocol with prescriptions from the commission, with a term for elimination of illegal interventions and **a preliminary hourly, geometrically increasing fine in case of failure to eliminate the registered violations within the term.** The procedure is **preventive**, without public resources to eliminate illegal interference, with the owner's responsibility to protect his own MC.

#### **4.1.8. CONSERVATION AND MANAGEMENT PLAN (CMP)**

**The CMP should be developed on the basis of the following principles:**

- Scientific approach in research and analysis, analysis and assessment of the condition.
- Concept for strategic and spatial development, complex spatial planning, investment design and implementation of CRW, construction and installation works, repair and public works, infrastructure in the protected area of the ICH.
- Transparency, partnership and civic participation in the decision-making process during the preparation of the CMP and the concept for its spatial development.
- Continuity of the action of the CMP, with continuity and coherence.
- Interdisciplinarity and professionalism in territorial defense.
- The way of management through the CMP is based on shared responsibility and integrated participation and cooperation of all stakeholders.

**The tools for practical application of the concepts in the CMP are:**

- Planning a strategy for long-term protection, maintenance and management.
- SWOT analysis - consideration of the strengths and weaknesses of each approach.
- Effectiveness of management - through interdisciplinary teams of responsible, qualified and ethical professionals, led by a manager.
- Conservation is based on the efforts of professionals and with the active participation of central and local authorities and local communities.
- Technological and term order of the conservation activities in the CMP.
- Information management - promotion and advertising.
- Provided continuous financial security.

#### **4.1.8.2. DESIGN OF CMP**

Of the minimum requirements in the Ordinance on CMP, the two parts - **DESCRIPTION AND SIGNIFICANCE OF ICC** and **ANALYSIS, EVALUATION AND CONCLUSIONS** constitute the **REPORT ON THE CONDITION** of the ICH object.

The report can be developed independently, with insufficient financial resources, if it is necessary to clarify regimes, protection zones, territorial scope.

Part **GOALS AND TASKS OF THE CMP** is the real part. It arranges priorities and tasks to achieve the set goals.

- From the conclusion that the CMP covers material resources, human resources, spiritual resources, time resources and financial resources and the level of their organization, **the goals, objectives and tools for achieving quality protection and socialization of a significant object of the CH with CMP should be formulated.**

The conclusions from the assessment of the condition and the important elements that make up the object and its environment outline **a strategy** for integrated conservation and change management, including regular inspections and maintenance, monitoring and control. The main goals and objectives are set out in long-term plans, and in medium-term and short-term programs the necessary activities are set out to achieve the operational goals, arranged technologically chronologically.

**IMPLEMENTATION OF CMP - PROGRAMS AND PROJECTS.** The programs specify the projects with objectives, description, stages of implementation and sources of funding, responsibilities and partnerships, arranged in sequence. A system for monitoring, reporting and control is defined. The following is prepared in tabular form:

- 1. Long-term program for implementation of the Plan for a period of 20 years;**
- 2. Five-year program;**
- 3. One-year work program.**

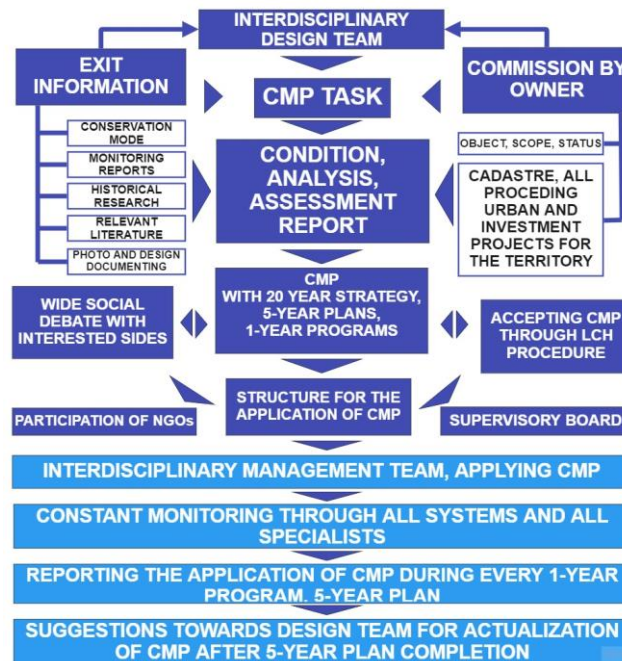


FIG. 14. Scheme for creation and functioning of CMP (author's)

• I consider it necessary to introduce a mandatory update of the CMP every 5 years, that is after the implementation of each medium-term program, the achieved results and changes in development are reported.

The last part of the minimum requirements are **APPENDICES** to the CMP - bibliography, international and national regulations, all processed development spatial plans and investment projects, registered and declared objects of CH and NH in/or related to the project area, map material, photo documentation, graphic and textual materials in digital and paper form and other applications. The Ordinance describes the detailed procedure until the approval and amendment of the CMP.

#### 4.1.8.2. IMPLEMENTATION OF CMP

The functioning of the CMP is based on:

- defined goals
- financing
- a set of principles for spatial planning, integrated conservation and socialization with economic objectives for added value of the CH object.
- Systematic through complete documentation of all interventions.
- multidisciplinary team of the object with clear organization, responsibilities and report.
- monitoring and control system.

The conservation and management plan is implemented through:

- Site **management** with the participation of representatives of conservation institutions, central and local authorities, with policies for conservation and use of AH;
- **Polydisciplinary professional team with high morale, responsible** for the correct implementation of the activities set in the project of the CMP.
- **Monitoring and Evaluation** - Continuous monitoring allows to identify destructive processes and to take adequate measures to respond to change.
- **Financing** - continuous investments for maintenance and protection of the ICH.
- **Coordination of the overall process** of sustainable development of the ICH object.
- **Public consensus and participation** in the adoption of the strategy and vision in CMP.

Based on the monitoring, the team responsible for the implementation of the CMP identifies unforeseen problems and puts them to the institutions for resolution.

- CMP is a comprehensive strategy for conservation with time-bound  
**science - planning - economics - organization - financing - management**
- CMP includes heritage, culture, art, economics, law, infrastructure, market, technology, advertising, media, institutions. Forms related policies such as strategic management and sustainable development through: scientific, technical, administrative, financial and promotion measures.
- CMP is an opportunity to **decentralize** conservation and create a **local professional capacity** responsible for conservation.
- CMP is a continuous reassessment of the state and importance of the cultural resource. Requires a **permanent on-site manager** and a **team** for supervision and decisions.
- CMP is a collective creation of an interdisciplinary team of specialists, led by a prominent professional in the field of conservation, spatial planning and architectural design. Introduce the figure of the "**manager**".

#### **4.2. Guidelines for improving national conservation system and territorial protection**

- Implementation of a **national strategy** for the protection of the ICH, under the auspices of the presidential government, with a national funding system.
- To build an independent **national system** for protection of the ICH with secured financial resources, with proven professional bodies, with high morale.

**An interested party (Stakeholder) in the ICH conservation system is a person or organization capable of influencing, being affected or perceived as affected by a given decision or activity in the protection of the CH.**

- To create **a national fund with financial resources** for the conservation of the ICH.
- It is necessary to establish **foundations** for CH at the local level, which finance and



manage a single product of all types of CC of movable, immovable and intangible CH for the development of cultural tourism.

- To establish a **National Agency for Preservation of Immovable Cultural Heritage** under Art. 7 of the LPDC, to be reported to the National Assembly annually of its activity.
- To restore **the scientific character** of the Agency for in-depth study of the objects of the ICH and to form an **Expert Council** for Conservation in it.
- The control in the activity “conservation of ICH” to be separated from the MiCu and to interact with the monitoring. The ICH Agency may decentralize the activity by opening territorial units in places, based on Art. 18, para 3 of the LCH, as branches.
- The regime for entry in the Public Register of the MiCu to become **licensed**. The signing of the Code of Ethics **should be a mandatory norm** for all participants in the process of protection of AH. Compliance with the Code of Ethics to be monitored by NGOs.
- **The code of ethics to be defined as territorial protection of the ICH.**

#### 4.2.1. Current status - legal regulation, risk management - proposals

The threats and risks of physical loss of parts or whole of the CH objects are:

- **rapid decomposition of the original substance of the MC** due to aging;
- **deterioration of the condition of the MC due to polluted environment;**
- **unfavorable climatic conditions, disasters** due to natural factors;
- **excessive urbanization, inappropriate new construction in the environment of ICH.**
- danger of armed conflict, hostilities and attacks, **vandalism.**
- **loading of objects and facilities from intensive visiting of tourists;**
- **loss of authenticity and integrity due to unlawful professional interference.**
- **improper adaptation and operation of buildings, non-maintenance or neglect, abandonment, illegal interference.**

- Permanent tolerance to illegal construction has been established - a risk for the CH.

• The state to establish a system for assessment of territorial protection on a regular basis monitoring of timely measures to preserve the authenticity and integrity of the AH.

Unlawful professional interference is due to lack of requirements for professionals in the LCH and Ordinance №H-3 of 2011 of the Ministry of Culture for the public register.

There are no procedures for deregistration in case of methodological error.

- The current procedure for detecting and eliminating illegal interference is slow and bureaucratic. **Prevention** is needed to prevent them.

- Decree of a commission for non-compliance with a processed project should not be



appealed in court, because the approved project is a valid administrative act.

#### 4.2.2. Guidelines for legal protection - proposals

- I propose that the concept of the status of a protected object in LCH be a “monument”, as “cultural costliness” is equivalent to the evaluation concept “cultural value”.
  - I propose further development of the concept of "historic urban landscape" in a new type of protected area with the concept of "**shared cultural space**".
  - "**Shared cultural space**" is a place with protected areas of the CH, history, ideas shared by living and residents who feel a sense of belonging, community, traditions, identity and responsibility for the preservation of cultural and natural resources, together with modern cultural development, to determine the proportions of development systems in each specific location.
  - In Art. 14 of the LCH changes the powers of the Minister of Culture - to monitor compliance with the rule of law and provide funding for the conservation of the ICH.
- To establish the **National Agency for ICH**, a state cultural institute of national importance for the implementation of the state policy in the field of conservation of ICH, under the supervision of the President and reporting to the National Assembly, with powers for carrying out scientific and strategic research and planning, methodological activity, identification, monitoring and control in the protection of the IAC.
- In order to facilitate the coordination procedures in the LCH, the two- and three-stage procedure under the authority of the Minister of Culture and three-member bodies in 6 regional centers should be abolished. Coordination activities should be carried out only in the Agency. All interventions should be discussed by an expert panel of the Conservation Council at NAICH. The term for ruling should be 2 months for monuments of world and national importance and 1 month for all other categories.

The ICH Inspectorate to become part of the ICH Agency.

- In the LCH to adopt a norm for prevention of illegal, unregulated and methodologically wrong interventions on the objects of the ICH - by issuing a small, increasing in geometric progression hourly fine until the elimination of illegal interference. The procedure should be signed with a commission on the spot, establishing in a document the illegal interference, giving a deadline for removal and warning of the consequences. The members of the commission on site review and describe in detail all deviations from the project documentation and/or lack of project documentation and performed intervention for elimination. A protocol sets a deadline for the elimination of the established illegal interventions and sets an hourly fine in the order of BGN 2 per hour, which is included

automatically after the expiration of the term and failure to eliminate the illegal interventions. The fine increases by the hour in a geometric progression until the offense is eliminated. It is the duty of the owner to notify the municipality with a declaration and proof of eliminated illegal deviations. The Commission should meet regularly every 6 months.

- The professionalism in the conservation should be licensed with a degree of knowledge and competencies, proven by projects and realizations before a commission of specialists. The Ordinance should provide a text for compliance with the Moral Code. To provide a procedure for deregistration of violators of the code from the public register.

- Introduce the figure of **the manager** in conservation of the ICH in the legal protection. He will represent the state (for the making of the CMP for objects - exclusive state property). He will monitor compliance with standards in activities for integrated conservation of the object of the AH and its environment. **The role of the manager** is:

- key and leading figure for organizing the whole process of territorial device protection as an exposed and socialized product, for its maintenance;
- organizer of the interdisciplinary team of various scientific experts and artists;
- ensures compliance with the copyrights of scientific and creative performers;
- organizing scientific forums, conferences and publishing scientific materials;
- ensures the advertising of the protected site of the ICH;
- provides relations with tourist and logistics companies, concludes contracts;
- participates in creating an innovative product for recreating history;
- is responsible with the finance team, provides funding for projects and activities;
- ensures the conclusion of compulsory insurance.

- To establish a norm for signing a **Code of Ethics** by all participants for compliance with international principles and methodology of conservation of ICH.

Include in the legal provisions the "shared cultural space" such as:

- **Instrument for Civic Stakeholder Engagement,**

- **A tool for knowledge and planning** to preserve the integrity and authenticity of objects and elements of urban heritage.

- Proposal for dropping the 14 m limit on the width of the street in Art. 79, para 4 of the LCH when determining a protection zone across a street for AH in the cities.

- Proposal for paragraph of art. 79 of the LCH with the text: "When a protection zone is not defined for a **group MC** located in a settlement territory in the act for declaring or granting status, to be considered as a certain preliminary protection zone - the territory

around the group monument, covering all immediately adjacent properties in the neighborhood through which the border of the group monument passes and/or the first row of properties of the neighborhoods across the street, as well as the street space between them when the border of the group monument coincides with a street regulation line ”.

#### 4.2.3. Guidelines for risk management and CONTROL

- Urgent update of the register of protected objects of the ICH, determination of the protection regime for all monuments, creation of a specialized cadastral map, digitalization of the documentary archive of the NIICH with electronic access.

**To prevent the destruction of an ICH object, it is necessary:**

- ensuring permanent financing of territorial structural protection.
- responsible highly professional team, with constant monitoring and care of the site.
- appointment of professionals for effective control.
- Management for protection of the most significant objects of the ICH.

#### 4.2.4. Guidelines for socialization - suggestions

- Study of the various aspects of the ICH, placed in a contemporary context:
  - **has scientific value and carries scientific information and knowledge** - is revealed through the cultural value and status of an object, documentation, scientific literature;
  - **has an individual vision and style and contributes to the specificity and uniqueness of the site** - it is emphasized with visual views, landscaping; continuous maintenance, monitoring, WDP, CRW, facade restoration, artistic lighting;
  - **has a functional value and an opportunity for appropriate socialization and use;**
  - **has an exposition value, which is presented in an innovative way, promotes cultural heritage** - storytelling - through scientific and advertising materials; virtual reconstructions, 3D models; cultural routes.
- A very important part of creating the image of a place is **advertising for it.**

#### 4.3. Alternative models for (provoking) conservation

The architecture of the city combines past, present and future in the design of aesthetics with the elements of "**space, time and storytelling**". In addition to spatial and artistic parameters, the design of the urban space should include lighting, sound installations, attractions, projections, routes to the favorite places of poets, artists, singers, athletes.

Established local Foundation combines the protection of all significant cultural resources in a place, all tangible and intangible traces, with professional capacity, the creation of laboratories to study the state of cultural costliness and objects, for monitoring. The action plan of the Foundation to be based on the minimum requirements for CMP in the

Ordinance of 2011 of MiCu, to create **a fund with a budget for territorial protection**.

- Public supervision through provided transparency for the decisions taken for the objects of the ICH - all administrative acts to be published for an informed society.
- The state to support the preservation of knowledge about construction traditions through training courses, qualifications, working conditions, high status of the profession.

## **CONCLUSION**

### **SUMMARIZED CONCLUSIONS FROM THE SCIENTIFIC WORK**

The main characteristics of the territorial spatial protection of the ICH are continuous **maintenance, continuous monitoring and research, continuous assessment** of the authenticity and issues and implemented practices.

The derived model of territorial spatial protection includes defined tools for overall sustainable protection and development of each object of the AH in the context of its environment, recognized by directly involved professionals and the local population for active assistance.

### **SCIENTIFIC AND SCIENTIFIC-PRACTICAL CONTRIBUTIONS**

The results of the research on the tasks set out in the Introduction (p. 10):

1.a) Study of the legal framework in Bulgaria, institutional and management systems of the protection and territorial protection of the AH since 1978 to this day.

Review of the legal and institutional framework of the whole system in action of the Law on Cultural Monuments and Museums (LMCM, repealed).

Analysis of the Law on Cultural Heritage (LCH, 2009).

As a result of the research, periodization is proposed with conclusions about their adequacy and usefulness for the territorial protection of the architectural heritage.

1.b) Systematization of the experience abroad as research, projects and implementations of MP and CMP in Bulgaria of World Heritage objects, with conclusions on good practices applicable to objects and sites in Bulgaria.

2. Research of modern trends, economic, social, technical, etc. factors, conditions and issues in the territorial structural protection of the objects of the ICH. As a result of the research, issues have been identified and guidelines have been proposed for improving the management model of CH protection. It is proposed to improve the territorialsatial protection with constant monitoring, hourly geometric fine, licensing regime for authorization. A theoretical model has been proposed for the protection of all traces of tangible and intangible CH and NH for each site through CMP.

Guidelines have also been provided for updating the legal framework of the activity of

territorial structural protection of the architectural heritage in order to recognize it as an essential factor for the modern development of each settlement and its community; Proposals for improvement of the normative base, related to the principles for the protection of AH not only in the LCH and not only by the professionals directly involved in its protection; with imposed responsibilities and incentives for the whole community on whose territory the protected territory is located.

3. Clarifications of concepts have been proposed, as well as a new type of protected area such as "shared cultural spaces".

An applied model has been developed - a strategy for integrated conservation with clearly defined goals, responsibilities and manager, incentives, proposed moral code, action plan, tools through which to implement continuous protection of each individual or group monument, and of its context, with active involvement in the modern living environment.

### **PROSPECTS FOR DEVELOPMENT**

Recommendations to institutions for changes in the LCH, the LPCHP and the LMDT.

Coherence of sustainable development policies, efficiency, transparency for tracking commitments, stimulating conservationists, partnership.

Draft Moral Code for stakeholders in the process of conservation of AH.

Training material in the master's degree "Conservation of AH".

**FIG. 11. COMPARATIVE TABLE OF EXAMPLES REVIEWED IN EUROPE WITH  
A MANAGEMENT PLAN**

WORLD HERITAGE OBJECTS WITH EXCEPTIONAL UNIVERSAL VALUE	TYPE / PROTECTED AREAS MONUMENT ENSEMBLE SIGHTSEEING PLACE CULTURAL LANDSCAPE		BUFFER ZONE	RESPONSIBLE INSTITUTION / PARTNERSHIPS /	MP TERM	PROBLEMS DERIVED	MONITORING	FINANCING
Roman Limes - Borders of the Roman Empire - Hadrian's Wall in Great Britain and Germany and the Antonine Shaft in Scotland	A /. Adrian's wall	ARCHAEOLOGICAL MC Transnational serial site European cultural route cultural landscape	chain of exhibited objects, cultural information centers and museums as a resource for cultural tourism  upgrades they are accepted as a buffer zone in height	International Planning Committee COORDINATOR The Partnership Council, which includes all stakeholders - ministries, Historical England Nature of England Local Government Parish Councils Society of Antiques in Newcastle upon Tyne and Cumberland; Westmoreland Antique and Archaeological Society; Universities in Durham, Newcastle upon Tyne and Manchester; private investors - Windoland Trust; Hadrian's Wall Heritage Ltd; Senhouse Museum Trust; Doverie National Trust	for 5 years developed at national level but coordinated internationally  The 5-year period provides an opportunity for reporting, analysis of the situation, revision and updating of all planned interventions, activities, policies and instruments of the Plan.	Conservation and valorization visitor flow management Tourism Management	The areas of responsibility of the development groups are: Heritage protection, planning and management; Archaeological research; Agricultural land management Communications and marketing; Tourism and transport; Learning and interpretation; THROUGH ANNUAL REPORTS	linking the tax system to clean environmental measures as part of the tax revenues are invested directly in sponsorship of CH and NH objects; The UK's National System for the Protection of the Environment, Cultural and Natural Heritage; SITA Trust - from the Landfill Communities Fund, serves to fund projects for environmental and public buildings in the United Kingdom;
	B /. The Upper German and Rhetia Limes wall	ARCHAEOLOGICAL MC Transnational serial object European cultural route cultural landscape	a chain of exhibited objects, cultural information centers and museums as a resource for cultural tourism; late reconstructions are accepted as a buffer zone in height	International Planning Committee Coordinators German Limes Commission The German Limes Commission Foundation is the coordinator	For 5 years super- regular strategic plan, consistent coordination of management; developed at the national and federal level, but coordinated internationally	Conservation and valorization management of the flow of visitors Tourism management / Large number of reconstructions of sites /		Tax relief
	C/. Antonin' s wall	ARCHAEOLOGICAL MC European cultural route cultural landscape linear monument within underdeveloped rural areas	Buffer zone with different widths, depending on the view	International Planning Committee Historical Environment Scotland	developed at national level but coordinated internationally	At the end of the wall to the east is a massive the petrochemical industry of Grandmouth. Park environment, requiring numerous parking lots; in urban areas with high construction a large part of the wall is not restored; Storage of toxic waste Inveravon in the 90s of last century		
The heart of the Neolithic Orkney - the Neolithic monument in Scotland	ARCHAEOLOGICAL MC archeological landscape natural site with biodiversity as a habitat for birds and wildlife and Brodgar Nature Reserve		the landscape is protected by a bilateral Buffer Zone - Buffer and Sensitive, focused on Scara Bray in the west and on the central-western monuments of the continent.	Historic environment Scotland Scotland Archeology, Orkney Archaeological Society and Orkney Heritage Society  The Royal Society Scottish natural heritage	5 year old MP; so far 3 MP The first is a general management plan for the CH and NH - 2001. allows for reporting, analysis of the situation, review and update of all planned interventions, activities, policies and instruments of the Plan WHS presentation and interpretation plan and access strategy - physical, intellectual and virtual Last 2012-2019	• the CH and NH objects coexist together; • The main problem is the combination of access - MCs are the object of cultural tourism, and the protection of natural monuments requires fewer visits • Physical risks include threats to the structure of monuments, especially erosion, potential impacts on nearby development and visitor access management	An important goal of all management plans is to observe and monitor (monitor) the erosion of the coast in Sky Bay and to review the strategy for the protection of Scara Bray. The scientific monitoring of House Seven, in Skara Brae, shows that additional measures are needed to preserve it for future generations. year-round observation Additional planning guide - rules for reflecting conservation requirements	The state budget, Help from UNESCO

WORLD HERITAGE OBJECTS WITH EXCEPTIONAL UNIVERSAL VALUE	TYPE / PROTECTED AREAS MONUMENT ENSEMBLE SIGHTSEEING PLACE CULTURAL LANDSCAPE	BUFFER ZONE	RESPONSIBLE INSTITUTION / PARTNERSHIPS /	MP TERM	PROBLEMS DERIVED	MONITORING	FINANCING
Boyana Church in Bulgaria	Single architectural and artistic MC	There is a certain protection zone around the property borders	The National History Museum	only a status report has been prepared, which is the first part of the CMP,	there is no appropriate information-cultural and exposition center Need for a general conservation plan; to update the protection regime	the lack of a permanent manager - restorer, as well as a team of professionals for constant supervision of its protection is a problem;	Budgetary resources and assistance from UNESCO
Ancient Nessebar, Bulgaria	ARCHITECTURAL AND URBAN MC The water area around the Nessebar peninsula and the coastline are incl. In Natura 2000, such as Eminie Protected Area BG0002043; Protected area Abeloy-Ravda-Nessebar BG0000574 in visual connection with dunes. <b>Urban historical landscape</b>	There is a certain buffer zone, which the CMP proposes to update to include more of the water area;	governing bodies – the CMP proposes to form a partnership network that includes all conservation stakeholders - the CoM, central and local organizations - the National Fund and the Board with stakeholder representatives	20-year-old first CMP, not in operation	The problem is the new non-scaled, non-compliant with the ICC and illegal construction; car traffic; movable trade stands; Lack of effective, timely control and appropriate measures to prevent and eliminate illegal and uncharacteristic interventions	The possibilities for providing the financial resource for the implementation of the CMP (Old Nessebar are not clearly outlined.	National Fund for Funding under the CMP
Classic Weimar in Germany	Urban historical landscape - the landmark of the world heritage includes twelve separate buildings or ensembles <b>Monument complex</b>	Buffer zones with monitoring corridors have been identified	Classical Weimar Foundation Monuments Council Cooperation between partners National Service for the Conservation of Monuments and Heritage and National Agency for Archeology	MP 12 years 2013-2025	preservation, modification, use and research of property and collections; creation of documentation, catalogs, research; presentation of museum objects and collections	monitoring system and two types of monitoring are defined - external and internal common administration system	Weimar-based Public Law Fund - The Foundation for Tax-Privileged Objectives
Mont Saint Michel in France	ARCHITECTURAL AND HISTORICAL MC Determination of a modified protected area around the objects of CH and NH	The buffer zone is at least 500 m in a circle around the monument; in addition, a "zone of landscape influence of Mont Saint-Michel" has been identified Casern Bay combined visibility of spaces	The Inspectorate General for Administration, the Inspectorate General for Cultural Affairs and the Inspectorate General for Finance to assist the state services Architects of buildings Center of National Monuments The Mixed Union of Mont Saint Michel Bay	MP in the process of preparation	the potential impact of planned wind farms on the landscape, numerous stakeholders with different goals, without a single leadership	Various institutions in charge of monitoring different parts of the territory	a subsidy of 50% of the cost of conservation work from the state is legally enshrined
Edinburgh's Old and New Town in Scotland	ARCHITECTURAL AND URBAN MC Urban historical landscape	Skyline of the silhouette / sky line / Certain conservation areas There is no defined buffer zone	World Heritage Committee, Historic Environment Scotland, Edinburgh Council	Several 5 year old MP Prepared vision until 2050.	Industrial part, outside the boundaries of the MC, with preserved parts in the style of the old building, which should be designed and built	Continuous through monitoring system	Heritage Lottery Foundation 80% of the funds are awarded as grants to property owners
The historic center of St. Petersburg and related cultural monuments in Russia	Serial world site of the CH - a remarkable place; unique cityscape with cultural landscape; Complex urban planning MC with many components	Skyline silhouette of / sky line / Combined zone for protection of the historic center Security zones around each MC with modes		CMP in the process of preparation	Four proposals for reduction in various device plans (without discussion and submission to UNESCO), of the protection zone, and of the protected area of World Heritage objects, as almost completely dropped Vasilevsky Island and the Petrograd country, and the southern border has moved from the Bypass Canal to Sadovoy and Fontanka, and even the protected area of Nevsky Prospekt has been reduced.	Developed system for monitoring and control by professional inspectors	

**FIG. 12. INDICATIVE ACTION PLAN (five-year and one-year) with operational objectives, key actions of the partners, necessary resources; the necessary projects, activities - CRW, construction and installation works, which are carried out and developed during the period of validity of the Plan.**

measures	protection and enhancement of the exceptional universal value of a World Heritage site, with management, protection and maintenance of cultural, historical and landscape costliness /values					
	Management plan Planned measures	Operational activities	Lead action group or partner stakeholders	monitoring	Financing	Deadline
<b>OBJECTIVE 1: Landmark and / or World Heritage Site and its buffer zone - status</b>						
1.1.	Preservation and preservation of the authenticity and integrity and continuous maintenance of WHS and monuments in accordance with national and international normative documents for protection	1.1.1. Scientific studies of the condition of the monument and its environment, on the basis of which all structural, conservation and restoration works are programmed, adaptations, socializations, exposure, in compliance with the technological sequence	Polydisciplines professional team	annual audit; intermediate inspections for the maintenance of the monument; monitoring through routine inspections of the monument.	Estimated for five years and Provided for the one-year period	Agreed program
		1.1.2. Continuous monitoring by modern means and computerized systems - recording the same. Position and digitalization of conservation; monitoring of past conservation actions	digital documentation and monitoring team	tool for continuous monitoring through computer systems and detection of physico-chemical processes	Use of digital data in conservation and monitoring of maintenance to ensure continuous funding.	Ongoing
		1.1.3. Maintaining practical skills for conservation and interpretation of the monuments of World Heritage, by providing appropriate training and continuous improvement.	Executive professional team of CRW and construction and installation work	Authorized officials of the site for periodic monitoring	Funding at the local level for the implementation and training of contractors in skills for the preservation of the monument; training, monitoring and documentation.	Ongoing
1.2.	Analysis and evaluation of the boundary of WHS and its Buffer Exclusive universal protection zone Value	1.2.1. Continuous review of all device plans and ongoing construction in the WHS boundary and buffer zone.	Steering Group and Polydisciplines professional team	Appointed object manager	Report prepared and adopted immediately by the steering group.	permanent
		1.2.2. Preparation of project documentation for the necessary intervention	Polydisciplines professional team	Appointed professional in charge of the object	Financing of the most urgent project activities in technological sequence.	In technological sequence
		1.2.3. Implementation and Provided an experienced executive team through continuous training in conservation and restoration interventions	Permanent executive team trained in the CRW	Appointed site manager	Decision and implementation	permanent
1.3	Raising awareness of The monument through Different ways - scientific symposia, advertising materials, through other arts	1.3.1. Interpretation of the value and costliness of the Monument, exposure and presentation as a cultural tourist site	The management team in partnership with the tourism business, the cultural community, and the local population and government	Polydisciplinary professional team implementing and controlling	Funding provided for organizing scientific and cultural performances	permanent



**AUTHOR'S PARTICIPATIONS IN SCIENTIFIC CONFERENCES AND PUBLICATIONS  
RELATED TO THE TOPIC OF THE DISSERTATION**

1./ Edreva, V., r. Most recent trends and tendencies in the field of preservation of Cultural Heritage highlighted in international documents and practices.,

11th INTERNATIONAL SCIENTIFIC CONFERENCE VSU' 2011,

C. VSU, p. III - 251-258, t. II, ISSN: 1314-071X

2./ Edreva, V., r. Revitalization of the „Sugar Factory" - rethinking its cultural and historical potential for modern use – options in student architectural projects in the academic year 2010–2011

12th INTERNATIONAL SCIENTIFIC CONFERENCE VSU' 2012,

C. VSU, c. IV – 186-191, t. II, ISSN: 1314-071X

3./ Edreva, V., r. The expository value of the basilica of „St Sophia“ and its environment in the city of Sofia.,

International Scientific Conference 2014, The Basilica of St. Sophia during the transition from paganism to Christianity “SOFIA MUSEUM OF HISTORY” SOFIA MUNICIPALITY.

*Collection Volume 7, Serdika - Sredets - Sofia*, Faber Publishing House, 2018,

p. 338 – 354, t. ISBN: 078-619-00-0762-3

4./ Edreva, V., r. Plans for protection and management of Cultural Heritage through integrated conservation.,

Conference of the Institute of Ethnology and Folklore with the Ethnographic Museum at the Bulgarian Academy of Sciences - "Preservation of cultural heritage, ideas and practices", 2016.

On the occasion of 60 years since Bulgaria's accession to UNESCO, Publishing House of BAS "Prof. Marin Drinov ", Sofia, 2017, p. 94 – 103, ISBN: 978-954-322-908-6

Bulgarian Academy of Sciences Institute of Ethnology and Folklore studies with Ethnographic Museum safeguarding of Cultural Heritage,

Safeguarding the cultural heritage, Ideas and Practices.

Dedicated to the 60th anniversary of the joining of Bulgaria to UNESCO Sofia • 2021, Prof. Marin Drinov Publishing House of Bulgarian Academy of Sciences, p.108-120, ISBN 978-619-245-160-8

5./ Edreva, V., r. Policies for the preservation of Cultural Heritage, according to ownership and cultural value.

XVII International Scientific Conference VSU "LYUBEN KARAVELOV" - SOFIA,

June 8-9, 2017, R, p. 202-207, vol III, ISSN: 1314-071X

6./ Edreva, V., r. Education in the protection of immovable Cultural heritage is an activity important for the national security of the country,

XVII International Scientific Conference VSU "LYUBEN KARAVELOV" - SOFIA,  
June 8-9, 2017, R, p. 208-213, vol III, ISSN: 1314-071X

7./ Edreva, V., r. Legislation and its impact on the sustainable conservation of immovable Cultural Heritage.,

Faculty of Architecture of Varna Free University "CHERNORIZETS HRABAR",  
8th International Scientific Conference on Architecture and Construction, June 1 - 3, 2017,  
p. 211-220, ISSN: 2535-0781

8./ Edreva, V., r. Church "St. George "s. Studena - a typical representative of the local construction and artistic traditions during the XIV - XV century in Bulgaria.,

Faculty of Architecture of Varna Free University "CHERNORIZETS HRABAR",  
8th International Scientific Conference on Architecture and Construction, June 1 - 3, 2017,  
p. 221-228, ISSN: 2535-0781

9./ Edreva, V., r. Survey and planning methodology for the protection of objects of immovable Cultural Heritage through protection and management plans (PMP).,

ASSOCIATION OF CIVIL ENGINEERS OF SERBIA (ACES)

Tenth international conference, Vrsac, 14 – 16 jun 2017.),

Zbornik Radovaq Desetog naucno-strucnog edunarodnog savetovanja, 2017, p. 621 – 628, ISBN: 978-86-88897-09-9

10./ Edreva, V., r. Management in the protection of the immovable Cultural Heritage.,

XVIII Jubilee International Scientific Conference "Construction and Architecture" VSU'2018,  
October 18 - 20, 2018, p. 62-63, Reports, ISSN: 1314-071X

*disk prf1278 – 6 p.*

## **THANKS**

*To my scientific consultant Assoc. Prof. Dr. Arch. Valentina Varbanova for the support and valuable advice and guidance during my work on the dissertation.*

*To all my sincere colleagues from VSU "Lyuben Karavelov" for their dedicated support and assistance; of arch. Dimitar Gochev for his assistance to St. Petersburg.*

*On the arch. Ulyana Maleeva for her assistance in obtaining foreign materials in the development of the dissertation.*

*To the colleagues from the archives of NIICH for the assistance.*

*I thank all colleagues who participated in the discussion of the dissertation of the Extended Department Council at VSU "Lyuben Karavelov" for the well-intentioned, professional and constructive reviews and opinions, which were in the direction of improving the work and which I took into account - Art. cor. Prof. Dr. Arch. Atanas Kovachev, Prof. Dr. Arch. Todor Krastev, Prof. Dr. Arch. Yordanka Kandulkova, Prof. Dr. Arch. Valeri Ivanov, Prof. Dr. L. Arch. Pencho Dobrev, Prof. Dr. Arch. Nikolay Tuleshkov, Prof. Dr. Blagovesta Ivanova, Prof. Dr. Arch. Yanko Alexandrov, Assoc. Prof. Dr. Arch. Velina Pandjarova, Assoc. Prof. Dr. Arch. Borislava Mancheva-Velkova, Assoc. Prof. Dr. Eng. Iliana Stoyanova, Dr. Arch. Radosveta Kirova*

*And finally to my family for their patience and support.*